

Working Instructions

- mechanical -



ST26i, ST26a

CONTENTS

1	Exterior Views.....	4
1.1	ST26i, ST26a.....	4
2	Tools	5
3	Disassembly.....	6
3.1	Battery Cover.....	6
3.2	Battery.....	6
3.3	Antenna BT WIFI & Antenna GPS & Antenna Main.....	7
3.4	Rear Cover	8
3.5	Core Unit Label.....	10
3.6	Sub Board Assembly	10
3.7	Front Cover Display Assembly	12
3.8	Main PBA & Link FPC	14
4	Replacement	16
4.1	Battery Cover.....	16
4.2	Antenna BT WIFI	16
4.3	Antenna GPS	16
4.4	Antenna Main.....	16
4.5	Rear Cover	17
4.6	Core Unit Label.....	17
4.7	Sub Board Assembly	17
4.8	Front Cover Display Assembly	17
4.9	Link FPC	18
4.10	Coaxial Cable.....	19
4.11	Connector Film (Front side of Main PBA).....	21
4.12	Connector Film (Back side of Main PBA)	23
4.13	LCM connector sponge	24
4.14	Link FPC kapton.....	25
4.15	Loudspeaker & Speaker Adhesive.....	27
4.16	Main Camera.....	29
4.17	Proximity rubber	31
4.18	Receiver & Receiver Adhesive	32
4.19	RF Rubber.....	34
4.20	Rubber Flash Led White	35
4.21	Side Key.....	36
4.22	SIM SD Side Key FPC.....	38
4.23	Water Indicator	40
4.24	Board Swap - Replacement	42
4.25	Board Swap – Change Label	42
4.26	Board Swap – Customize of Software	42

5 Reassembly..... 43

5.1 Main PBA & Link FPC 43

5.2 Front Cover Display Assembly 44

5.3 Sub Board Assembly 48

5.4 Rear Cover 51

5.5 Antenna BT WIFI & Antenna GPS & Antenna Main..... 53

5.6 Core Unit Label..... 55

5.7 Battery..... 56

5.8 Battery Cover..... 56

6 Revision History 57

For general information about mechanical repair related issues, refer to
1220-1333: Generic Repair Manual - mechanical

1 Exterior Views

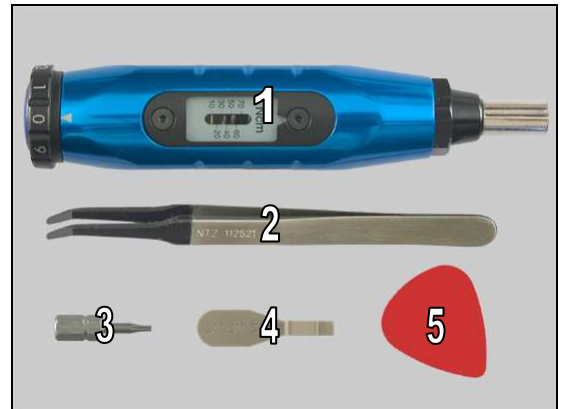
1.1 ST26i, ST26a



2 Tools

SPECIAL TOOLS

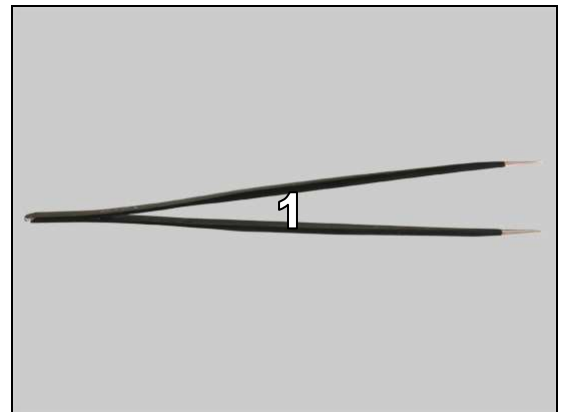
1. Torque Screwdriver
2. Flex Film Assembly Tool
3. Bits (T5)
4. Front Opening Tool
5. Guitar Pick



For part no's on the tools above, refer to the 'Tools Catalogue/Matrix'!

STANDARD TOOLS

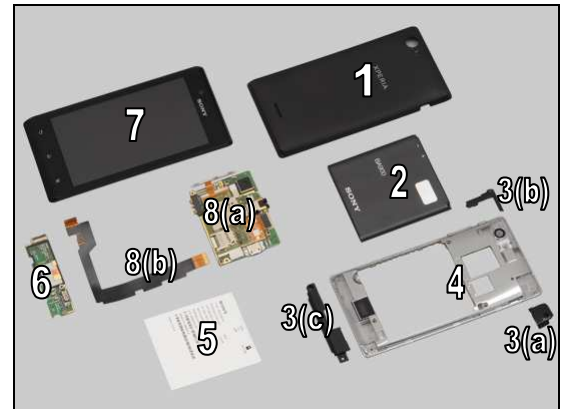
1. Tweezers



3 Disassembly

The disassembly is done in the following order:

1. Battery Cover
2. Battery
3. Antenna BT WIFI (a) & Antenna GPS (b) & Antenna Main (c)
4. Rear Cover
5. Core Unit Label
6. Sub Board Assembly
7. Front Cover Display Assembly
8. Main PBA (a) & Link FPC (b)



3.1 Battery Cover

Insert a finger into the gap as shown in picture and gently pull upwards to release the hooks of the Battery Cover.

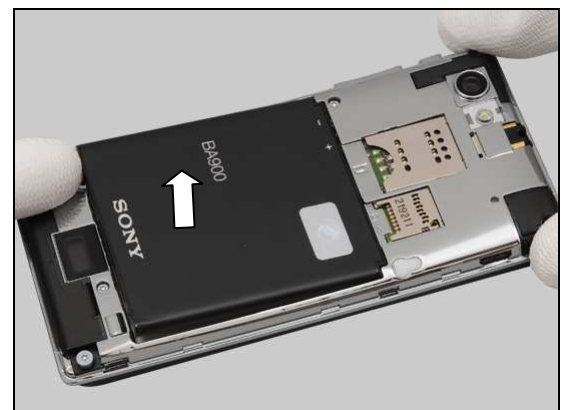


Turn around and remove the Battery Cover.



3.2 Battery

Insert a finger and raise the bottom of the battery to release it.



Disassembly

Remove the battery.



3.3 Antenna BT WIFI & Antenna GPS & Antenna Main

Remove the three Screw M1.6*4.2 by using a screwdriver with Bits (T5).

Scrap! Not to be reused!

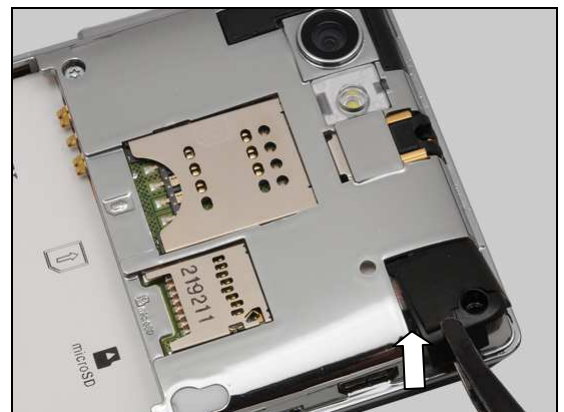


Remove the Screw Lanyard M1.6*3.2 by using a screwdriver with Bits (T5).

Scrap! Not to be reused!

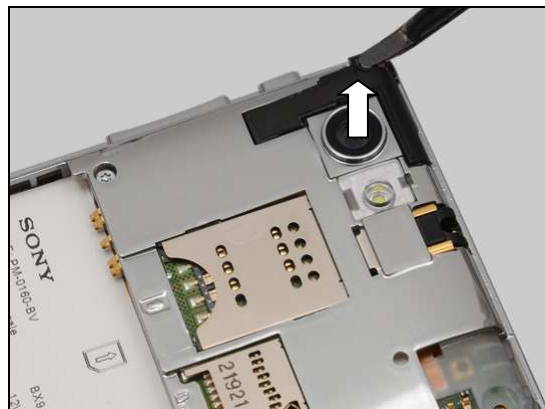


Remove the Antenna BT WIFI by using a Flex Film Assembly Tool.

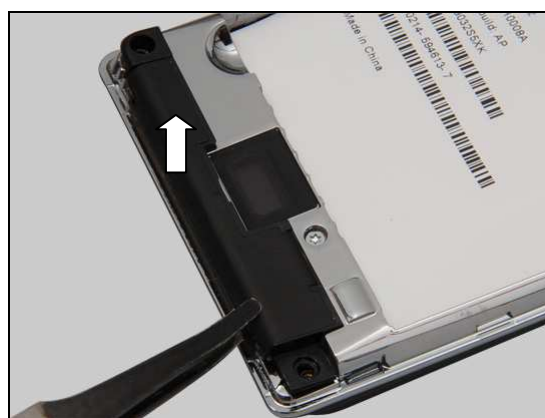


Disassembly

Remove the Antenna GPS by using a Flex Film Assembly Tool.



Remove the Antenna Main by using a Flex Film Assembly Tool.



3.4 Rear Cover

Remove the RF Rubber by using a Flex Film Assembly Tool.



Remove the Screw M1.6*4.2 by using a screwdriver with Bits (T5).

Scrap! Not to be reused!



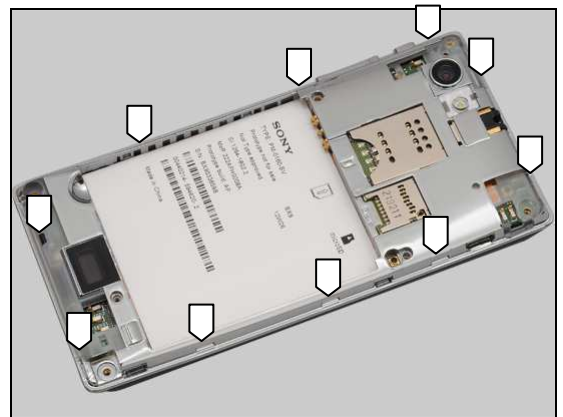
Disassembly

Remove the three Screw M1.6*2.8 by using a screwdriver with Bits (T5).

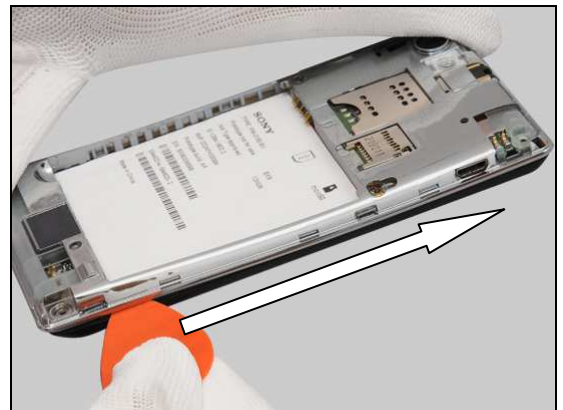
Scrap! Not to be reused!



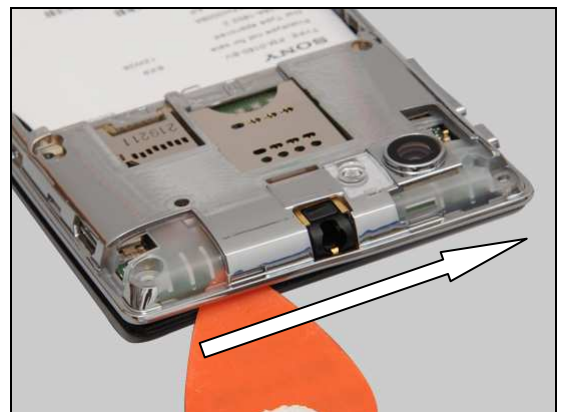
There are ten snap hooks securing the Rear Cover.



Insert a Guitar Pick as shown in picture and gently pull upwards to release the three hooks of this side.

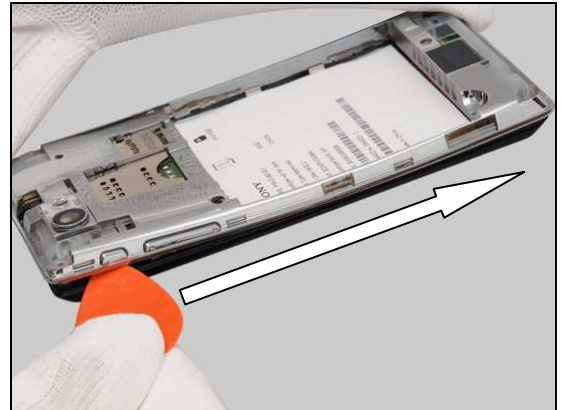


Do the same to the top side.

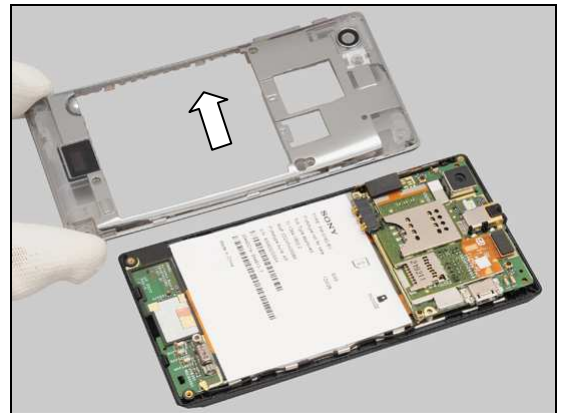


Disassembly

Do the same on the left side.

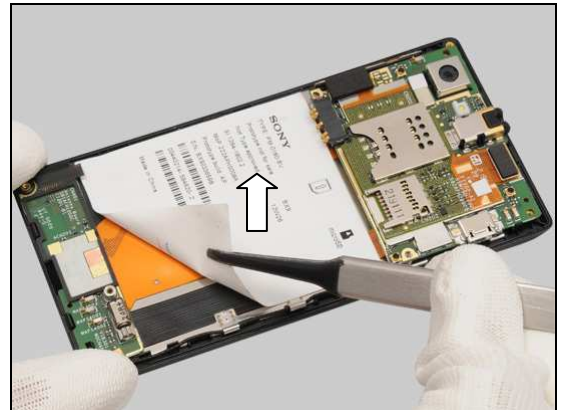


Remove the Rear Cover.



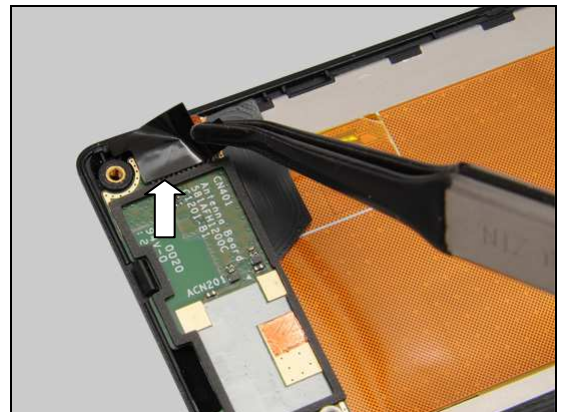
3.5 Core Unit Label

Carefully remove the Core Unit Label by using a Flex Film Assembly Tool.



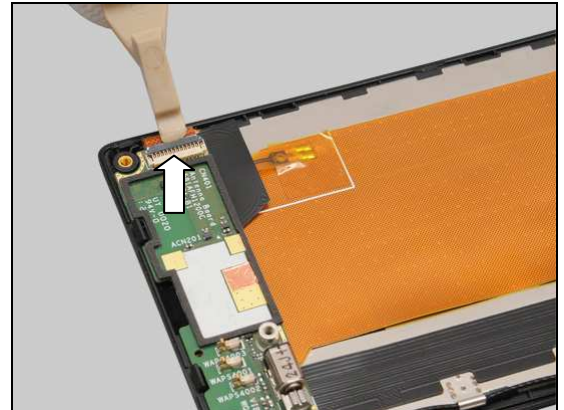
3.6 Sub Board Assembly

Peel off the Link FPC kapton.

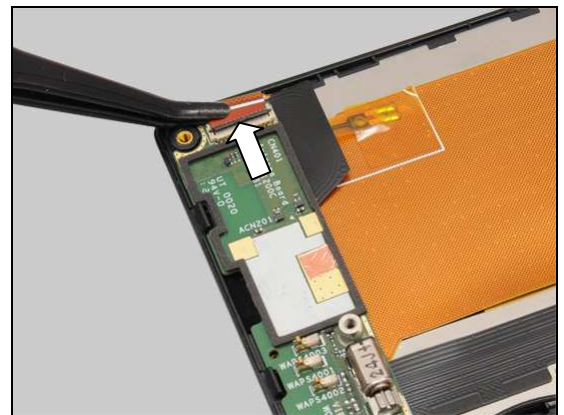


Disassembly

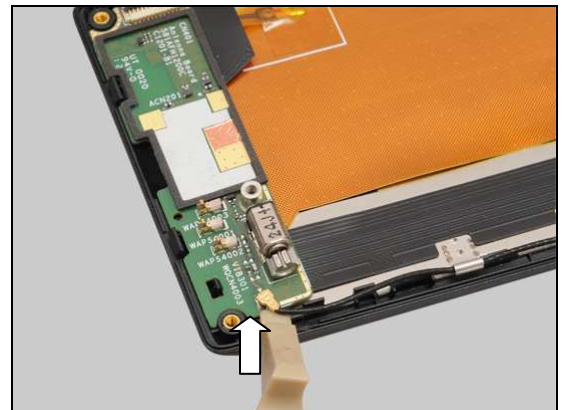
Unlock the ZIF connector by using a Front Opening Tool.



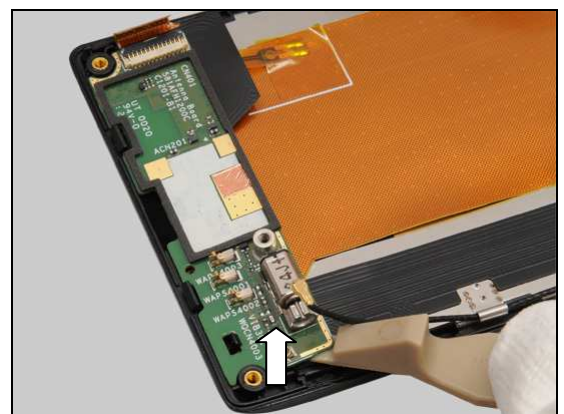
Release the flex part.



Disconnect this end of the Coaxial Cable.



Insert a Front Opening Tool as shown in picture and gently pull upwards to release the hook.



Disassembly

Remove the Sub Board Assembly.



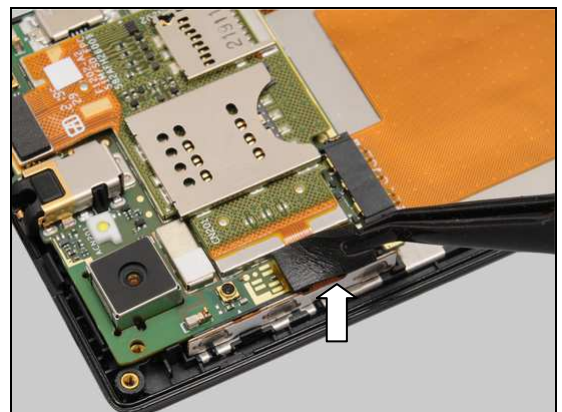
3.7 Front Cover Display Assembly

Gently pull upwards to detach the Link FPC from the Front Cover Display Assembly.

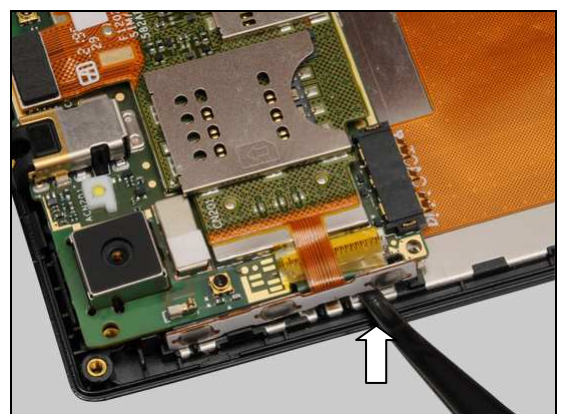
Clean the surplus adhesive on Front Cover Display Assembly if have!



Peel off the LCM connector sponge.



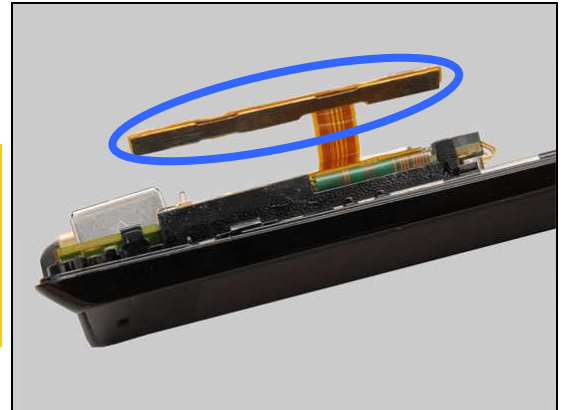
Release the foil from down side of the key dome and lift it up by using a Flex Film Assembly Tool.



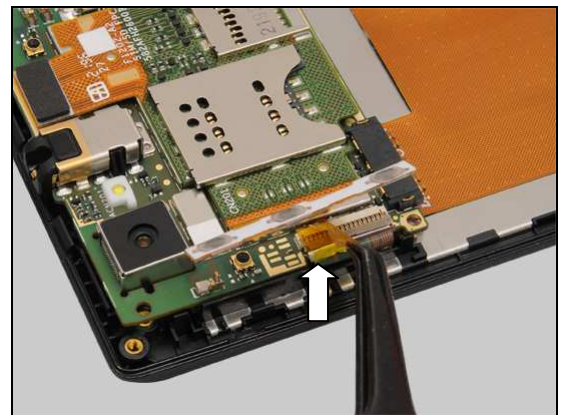
Disassembly

Check the adhesive on the back side of SIM SD Side Key FPC.

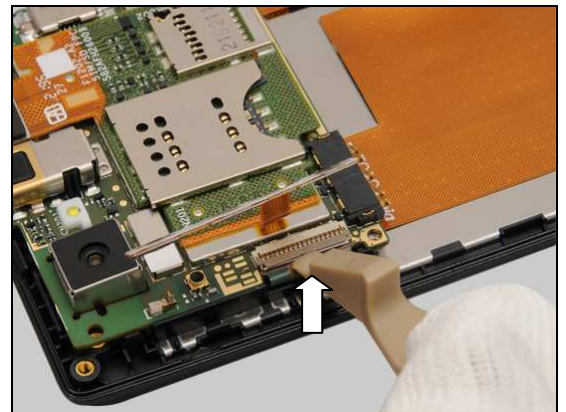
If the side key adhesive is not damaged after disassembly, the SIM SD Side Key FPC can be reused one time only! Otherwise always scrap the SIM SD Side Key FPC after side key disassembly whatever the side key adhesive is damaged or it's disassembled more than two times!



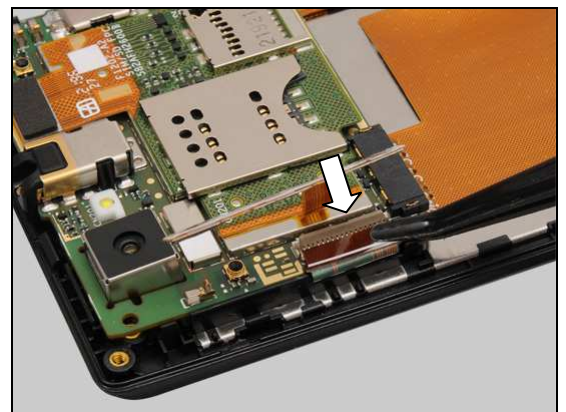
Peel off the Connector Film.



Unlock the ZIF connector by using a Front Opening Tool.

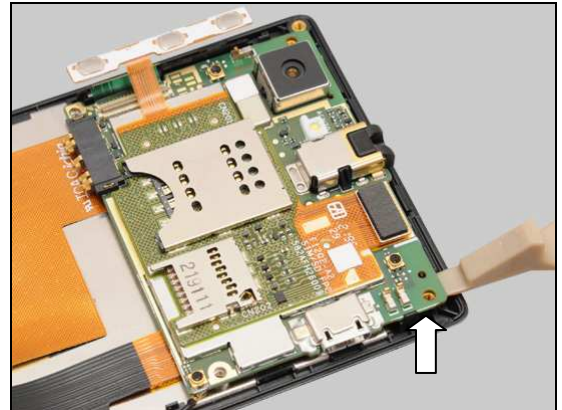


Release the flex part.



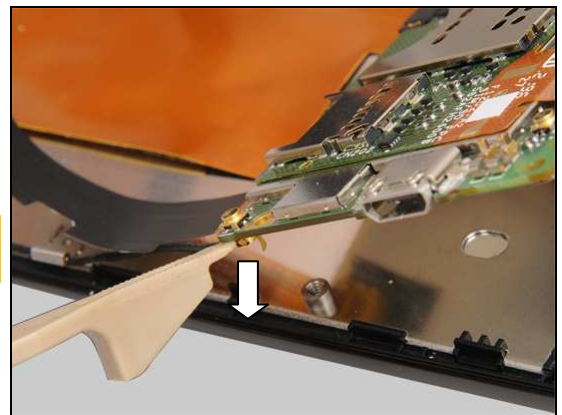
Disassembly

Insert a Front Opening Tool as shown in picture and gently pull upwards to release the hook.

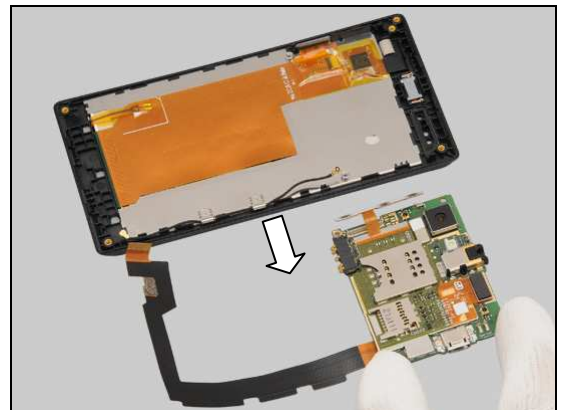


Disconnect the Coaxial Cable from Main PBA as shown in the picture.

Be careful not to pull/damage the Coaxial Cable during Disassembly!

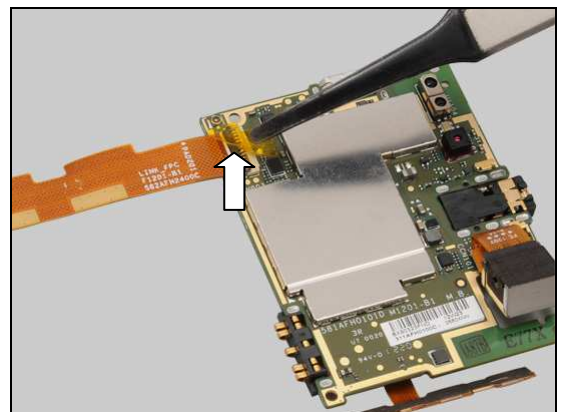


Separate the Main PBA with the Link FPC and Front Cover Display Assembly.



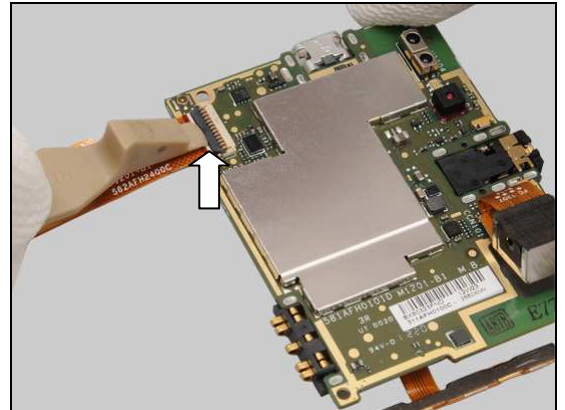
3.8 Main PBA & Link FPC

Turn over the Main PBA and peel off the Connector Film.



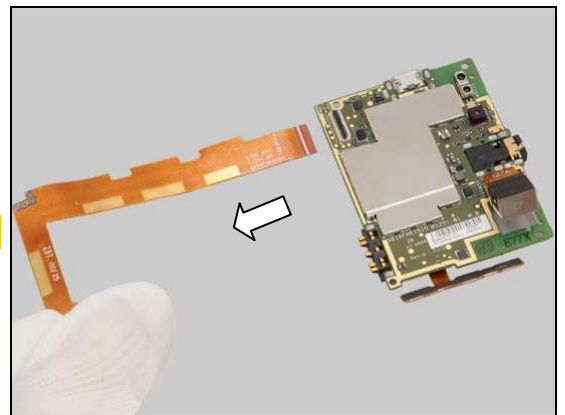
Disassembly

Unlock the ZIF connector by using a Front Opening Tool.



Separate the Main PBA and the Link FPC.

Link FPC can't be reused after disassembly, scrap!



4 Replacement

4.1 Battery Cover

Follow the 3.1 Disassembly instructions!

Prepare a new Battery Cover.

Follow the 5.8 Reassembly instructions!



4.2 Antenna BT WIFI

Follow the 3.1 – 3.3 Disassembly instructions!

Prepare a new Antenna BT WIFI.

Follow the 5.5, 5.7 – 5.8 Reassembly instructions!



4.3 Antenna GPS

Follow the 3.1 – 3.3 Disassembly instructions!

Prepare a new Antenna GPS.

Follow the 5.5, 5.7 – 5.8 Reassembly instructions!



4.4 Antenna Main

Follow the 3.1 – 3.3 Disassembly instructions!

Prepare a new Antenna Main.

Follow the 5.5, 5.7 – 5.8 Reassembly instructions!



Replacement

4.5 Rear Cover

Follow the 3.1 – 3.4 Disassembly instructions!

Prepare a new Rear Cover.

Follow the 5.4 – 5.5, 5.7 – 5.8 Reassembly instructions!

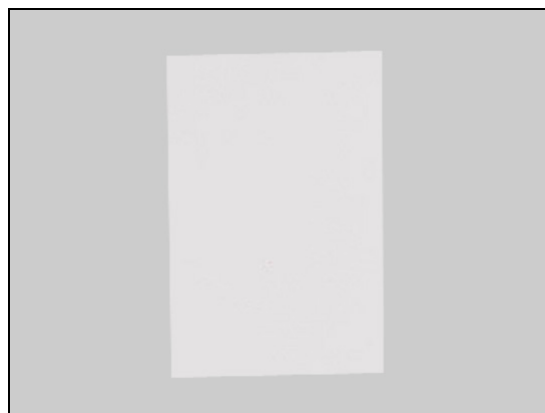


4.6 Core Unit Label

Follow the 3.1 – 3.5 Disassembly instructions!

Prepare a new Core Unit Label.

Follow the 5.4 – 5.8 Reassembly instructions!

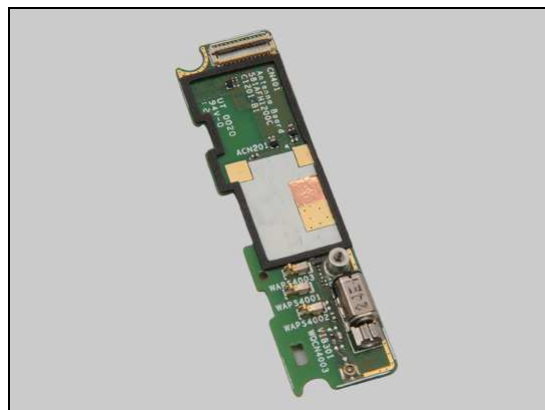


4.7 Sub Board Assembly

Follow the 3.1 – 3.6 Disassembly instructions!

Prepare a new Sub Board Assembly.

Follow the 5.3 – 5.8 Reassembly instructions!



4.8 Front Cover Display Assembly

Follow the 3.1 – 3.7 Disassembly instructions!

Prepare a new Front Cover Display Assembly.

Follow the 5.2 – 5.8 Reassembly instructions!

Note: Calibrate the Touch Panel 1270-6729 Trouble Shooting Application – mechanical after replacement.



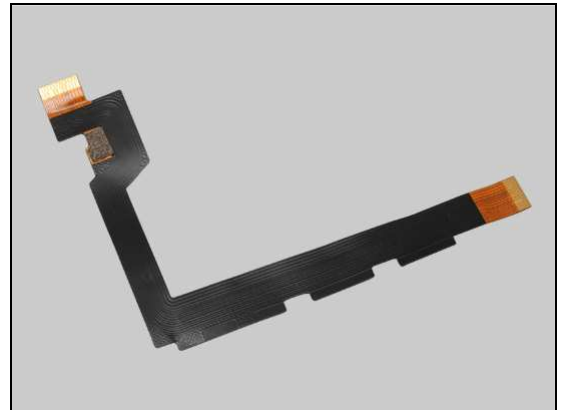
Replacement

4.9 Link FPC

Follow the 3.1 – 3.8 Disassembly instructions!

Prepare a new Link FPC.

Follow the 5.1 – 5.8 Reassembly instructions!



Replacement

4.10 Coaxial Cable

Follow the 3.1 – 3.7 Disassembly instructions!

Carry out the Removal as described below.

Prepare a new Coaxial Cable.

Carry out the Installation as described below.

Follow the 5.2 – 5.8 Reassembly instructions!

REMOVAL

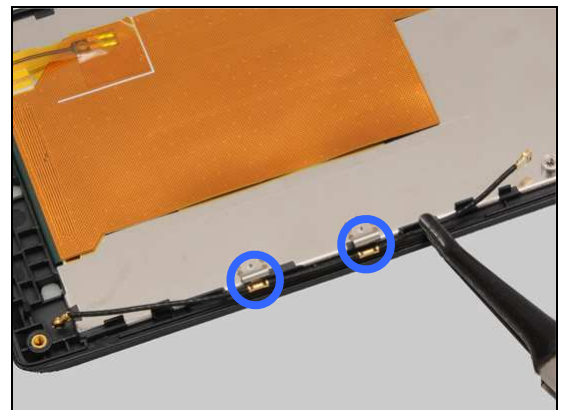
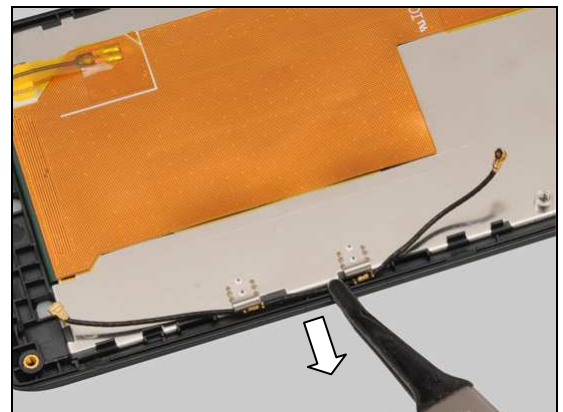
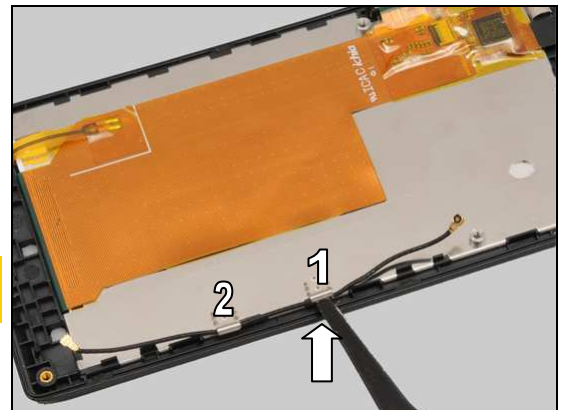
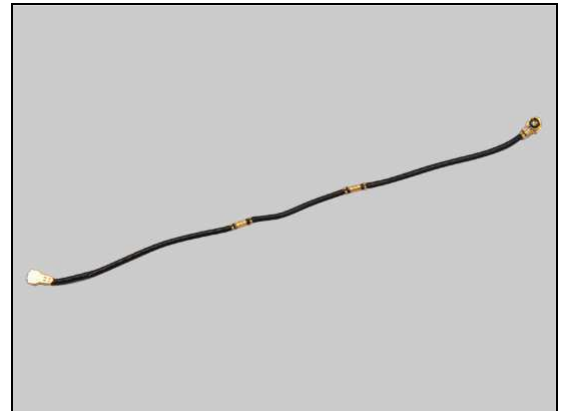
Push the two metal hooks a little higher to release Coaxial Cable by using a Flex Film Assembly Tool.

Only push the hooks a little higher, not to damage these two metal hooks!

Release the Coaxial Cable from its cavity and remove it.

INSTALLATION

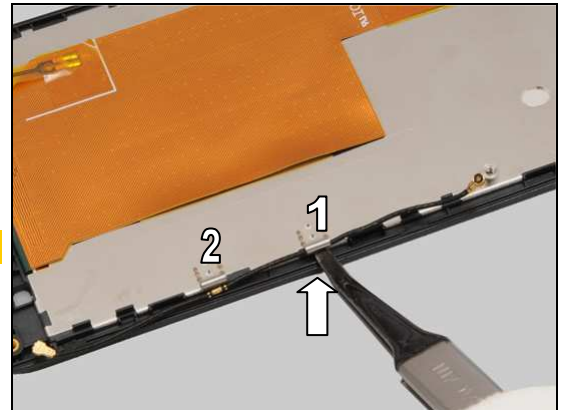
Place a new Coaxial Cable in the correct position as shown in the picture.



Replacement: Coaxial Cable

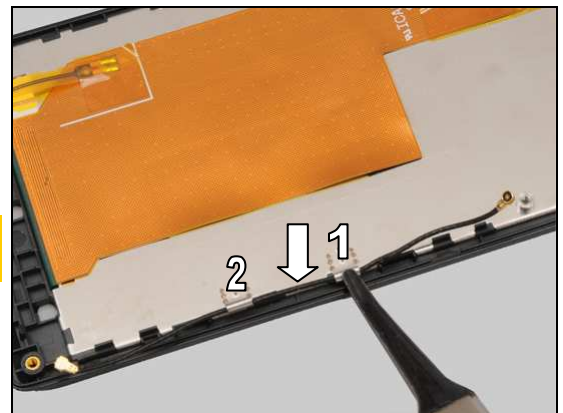
Insert the Coaxial Cable into the two hooks on Front Cover Display Assembly by using Flex Film Assembly Tool.

Note: Gently secure the cable without causing damage.



Press down the two metal hooks a little lower by using a Flex Film Assembly Tool to hold the Coaxial Cable.

Be careful about the two connectors' correct direction of Coaxial Cable!



Replacement

4.11 Connector Film (Front side of Main PBA)

Follow the 3.1 – 3.4 Disassembly instructions!

Follow the 4.13 Removal instructions!

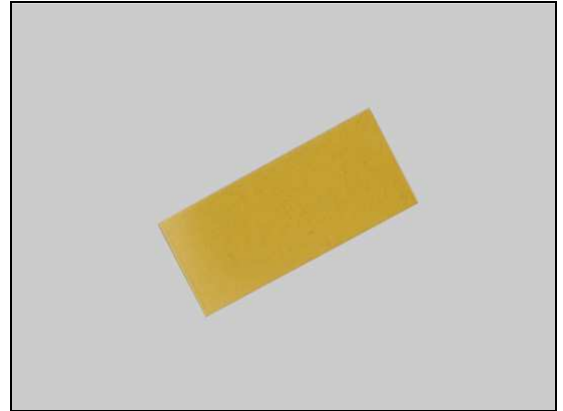
Carry out the Removal as described below.

Prepare a new Connector Film.

Carry out the Installation as described below.

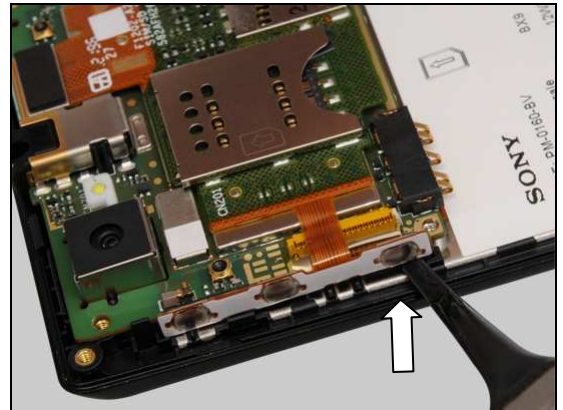
Follow the 4.13 Installation instructions!

Follow the 5.4 – 5.5, 5.7 – 5.8 Reassembly instructions!



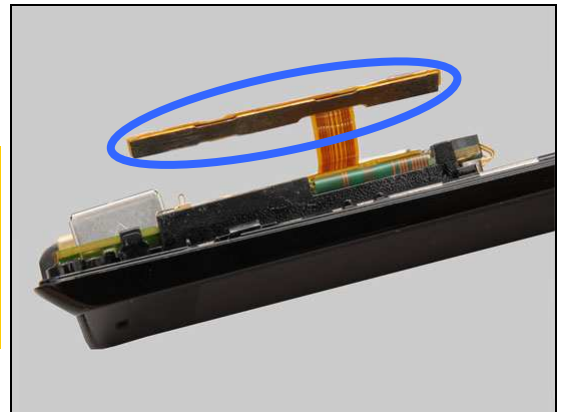
REMOVAL

Release the foil from down side of the key dome and lift it up by using a Flex Film Assembly Tool.



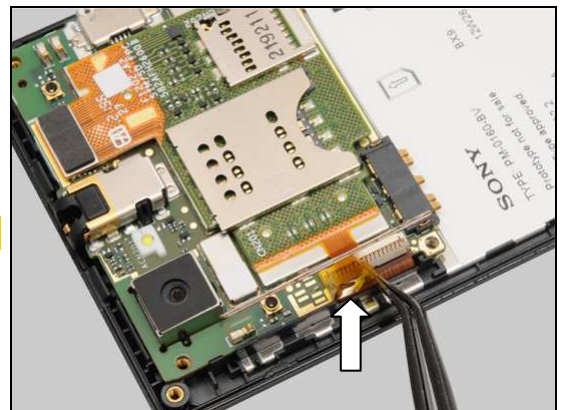
Check the adhesive on the back side of SIM SD Side Key FPC.

If the side key adhesive is not damaged after disassembly, the SIM SD Side Key FPC can be reused one time only! Otherwise always scrap the SIM SD Side Key FPC after side key disassembly whatever the side key adhesive is damaged or it's disassembled more than two times!



Peel off the Connector Film.

Scrap! Not to be reused!



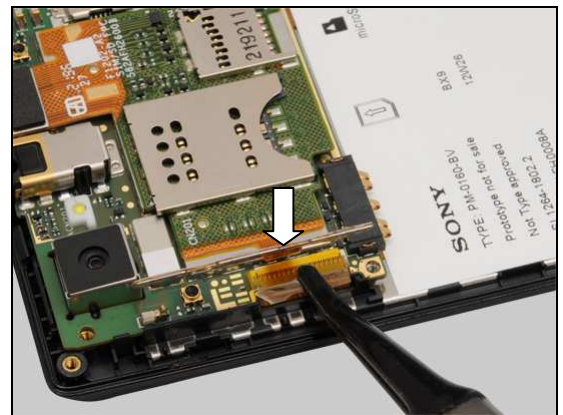
Replacement: Connector Film

INSTALLATION

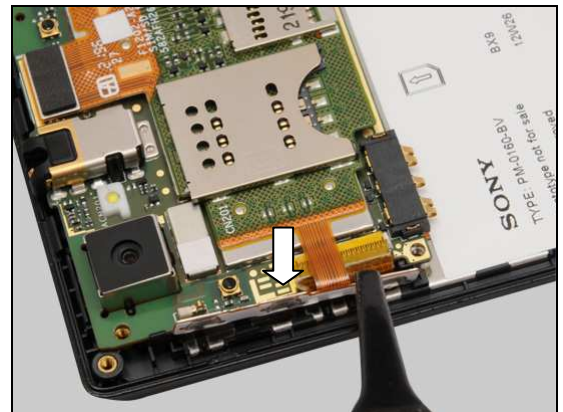
Place a new Connector Film in the correct position as shown in the picture.



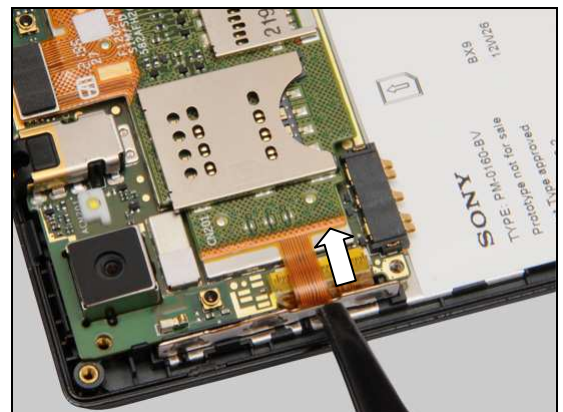
Press to secure its attachment.



Insert the key dome of SIM SD Side Key FPC into the cavity.



Press to secure its attachment.



Replacement

4.12 Connector Film (Back side of Main PBA)

Follow the 3.1 – 3.7 Disassembly instructions!

Carry out the Removal as described below.

Prepare a new Connector Film.

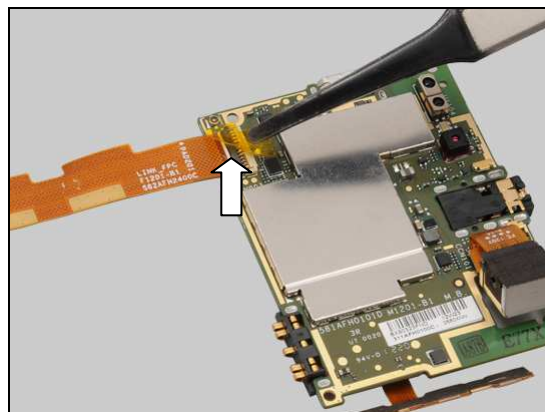
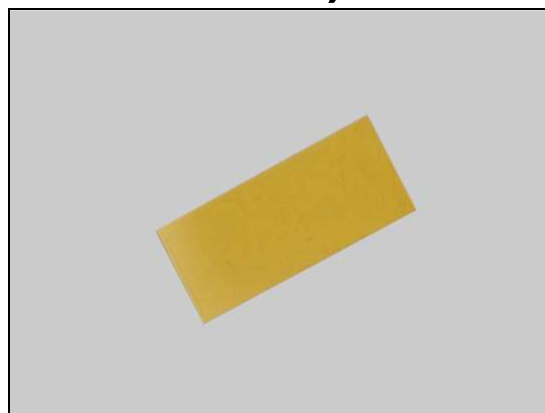
Carry out the Installation as described below.

Follow the 5.2 – 5.8 Reassembly instructions!

REMOVAL

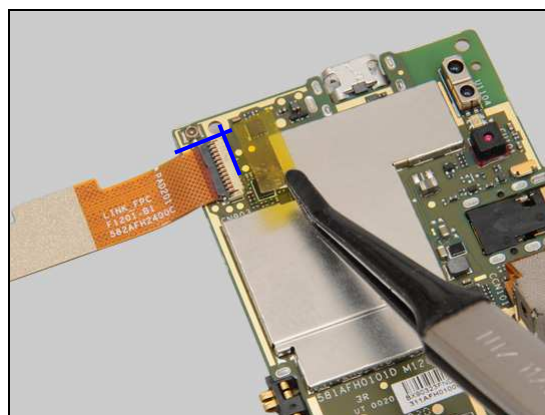
Peel off the Connector Film.

Scrap! Not to be reused!

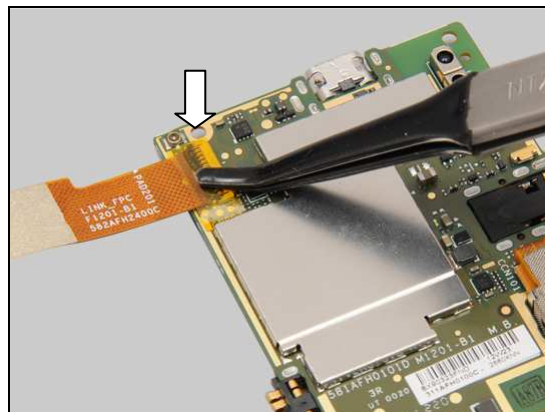


INSTALLATION

Place a new Connector Film in the correct position as shown in the picture.



Press to secure its attachment.



Replacement

4.13 LCM connector sponge

Follow the 3.1 – 3.4 Disassembly instructions!

Carry out the Removal as described below.

Prepare a new LCM connector sponge.

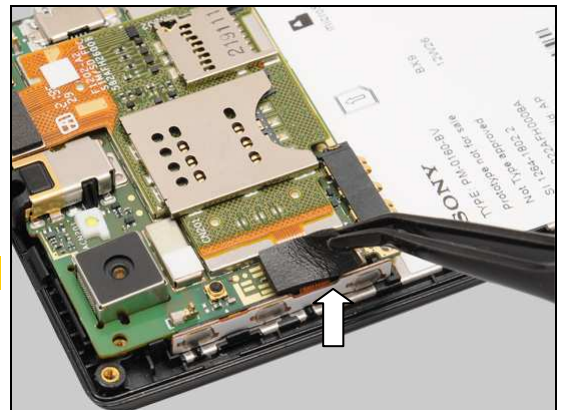
Carry out the Installation as described below.

Follow the 5.4 – 5.5, 5.7 – 5.8 Reassembly instructions!

REMOVAL

Peel off the LCM connector sponge.

Scrap! Not to be reused!

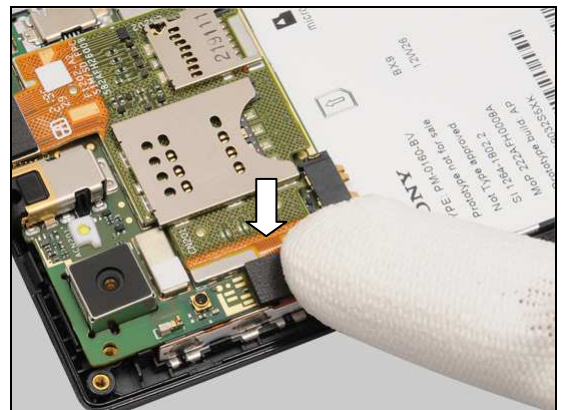


INSTALLATION

Place a new LCM connector sponge in the correct position as shown in the picture.



Press to secure its attachment.



Replacement

4.14 Link FPC kapton

Follow the 3.1 – 3.4 Disassembly instructions!

Carry out the Removal as described below.

Prepare a new Link FPC kapton.

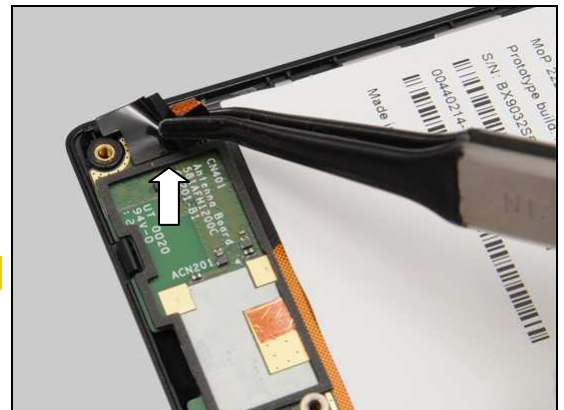
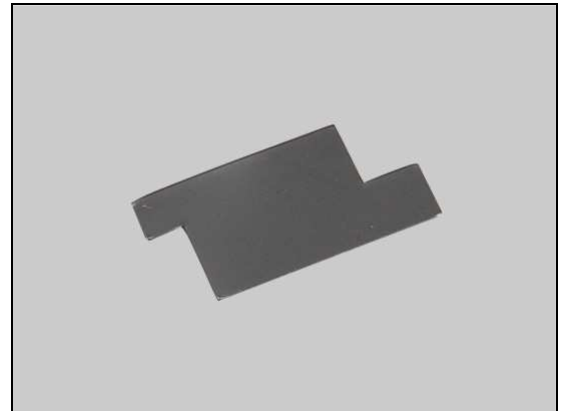
Carry out the Installation as described below.

Follow the 5.4 – 5.5, 5.7 – 5.8 Reassembly instructions!

REMOVAL

Peel off the Link FPC kapton.

Scrap! Not to be reused!

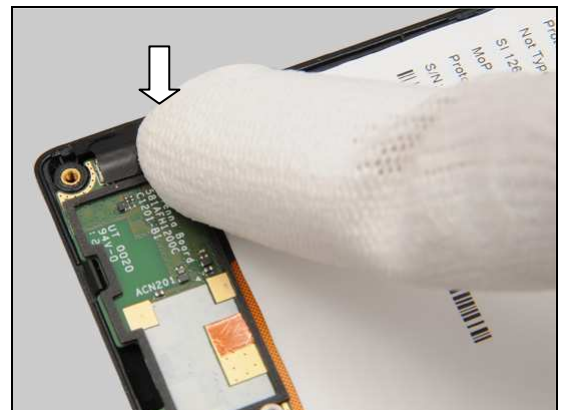


INSTALLATION

Place a new Link FPC kapton in the correct position as shown in the picture.

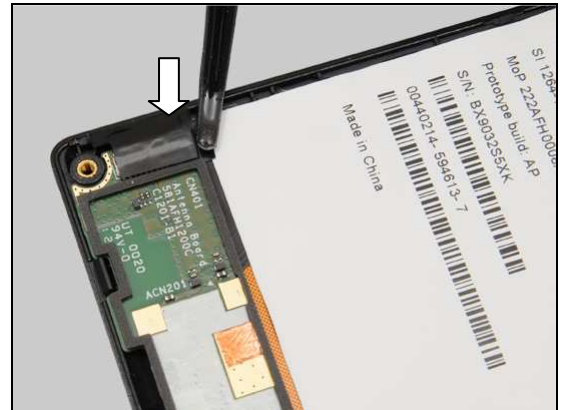


Press to secure its attachment.



Replacement: Link FPC kapton

Press down to secure its attachment.



Replacement

4.15 Loudspeaker & Speaker Adhesive

Follow the 3.1 – 3.4 Disassembly instructions!

Carry out the Removal as described below.

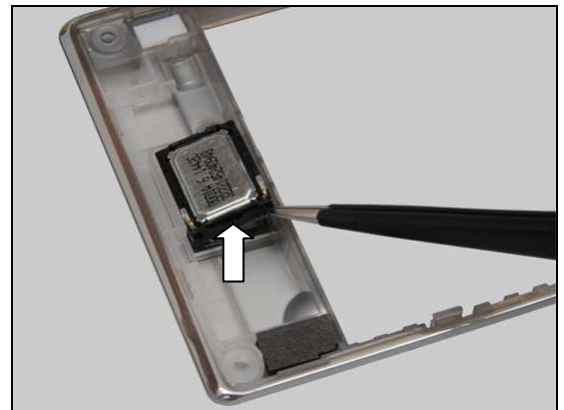
Prepare a new Loudspeaker and Speaker Adhesive.

Carry out the Installation as described below.

Follow the 5.4 – 5.5, 5.7 – 5.8 Reassembly instructions!

REMOVAL

Detach the Loudspeaker by using a pair of tweezers.



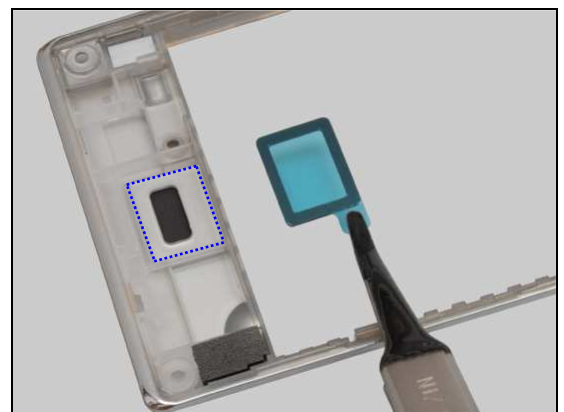
Peel off the Speaker Adhesive.

Scrap! Not to be reused!



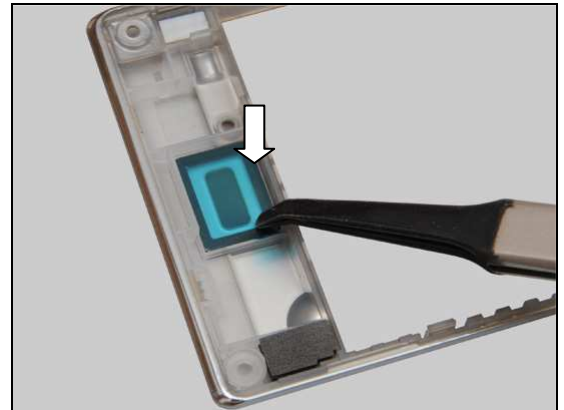
INSTALLATION

Place a new Speaker Adhesive in the correct position as shown in the picture.

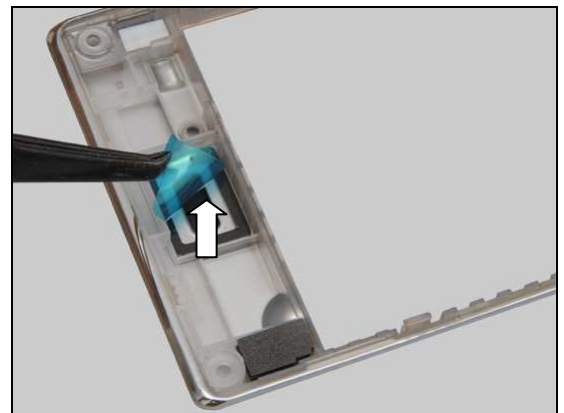


Replacement: Loudspeaker & Speaker Adhesive

Press to secure its attachment.

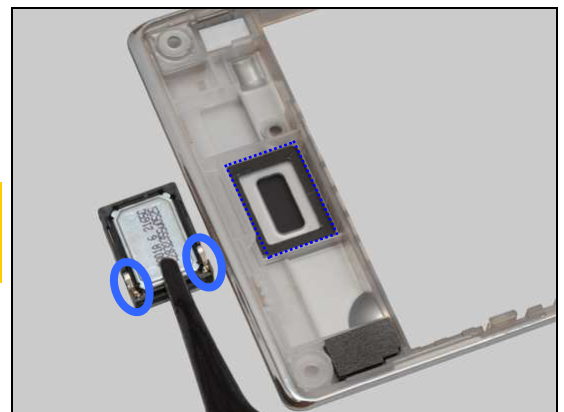


Peel off the protection film.



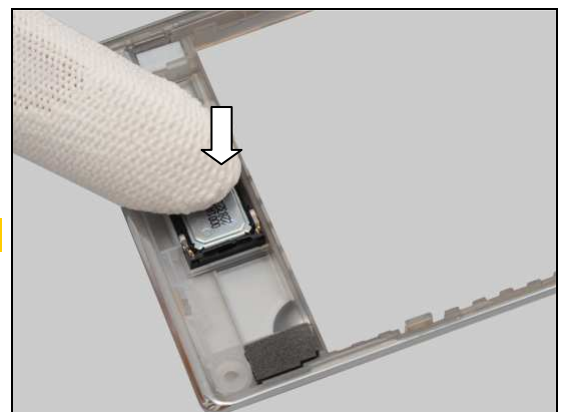
Place a new Loudspeaker in the correct position.

***The pin direction should be as shown in the picture!
Make sure there is no adhesive on the back side of the Loudspeaker.***



Press to secure its attachment.

Do not touch the pins of the Loudspeaker!



Replacement

4.16 Main Camera

Follow the 3.1 – 3.8 Disassembly instructions!

Carry out the Removal as described below.

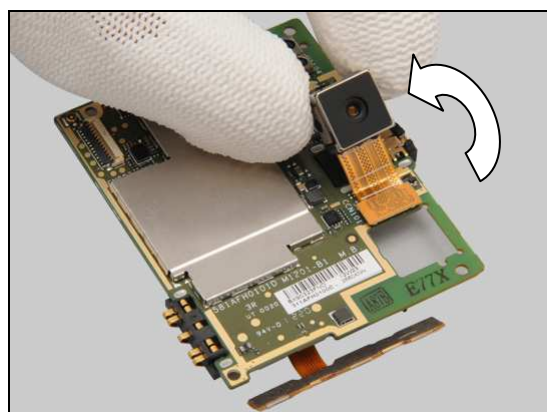
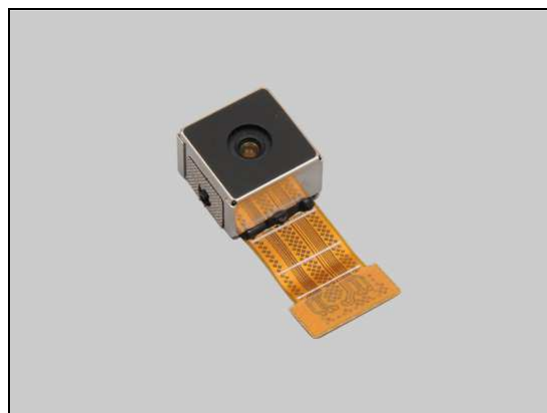
Prepare a new Main Camera.

Carry out the Installation as described below.

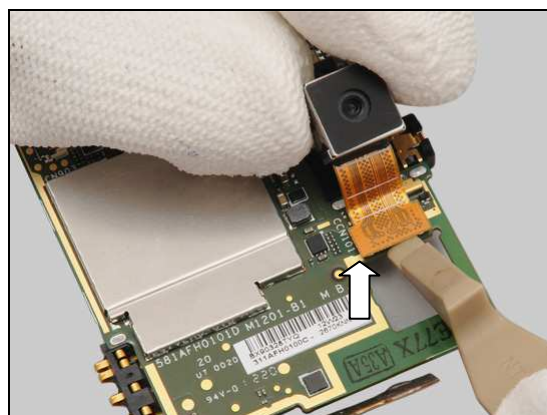
Follow the 5.1 – 5.8 Installation instructions!

REMOVAL

Turn over the Main Camera to release it from the cavity.

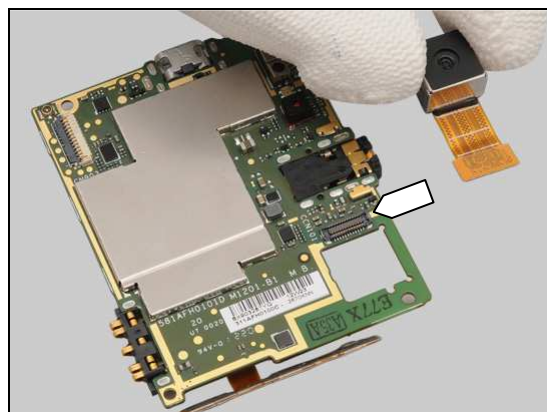


Unsnap the BtB connector and remove the Main Camera.



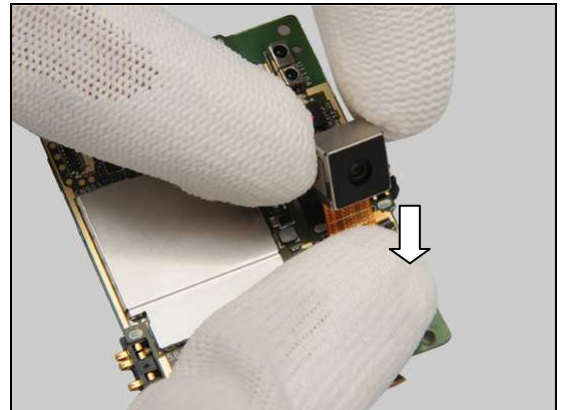
INSTALLATION

Place the new Main Camera in the correct position.

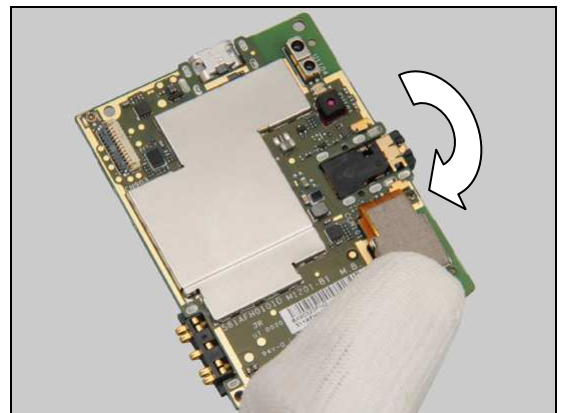


Replacement: Main Camera

Snap the BtB connector.



Turn the Main Camera into the cavity.



Replacement

4.17 Proximity rubber

Follow the 3.1 – 3.7 Disassembly instructions!

Carry out the Removal as described below.

Prepare a new Proximity rubber.

Carry out the Installation as described below.

Follow the 5.2 – 5.8 Reassembly instructions!

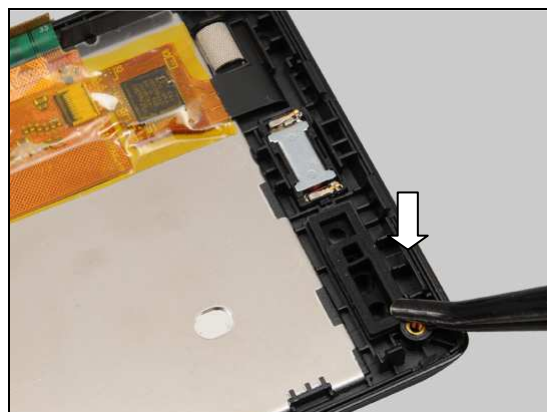
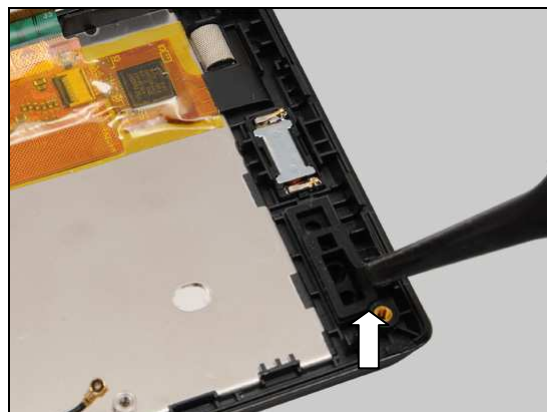
REMOVAL

Detach and remove the Proximity rubber by using a Flex Film Assembly Tool.

INSTALLATION

Place a new Proximity rubber in the correct position as shown in the picture.

Press to secure its position.



Replacement

4.18 Receiver & Receiver Adhesive

Follow the 3.1 – 3.7 Disassembly instructions!

Carry out the Removal as described below.

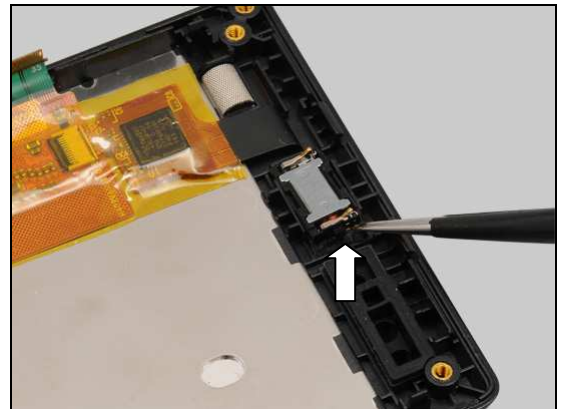
Prepare a new Receiver and Receiver Adhesive.

Carry out the Installation as described below.

Follow the 5.2 – 5.8 Reassembly instructions!

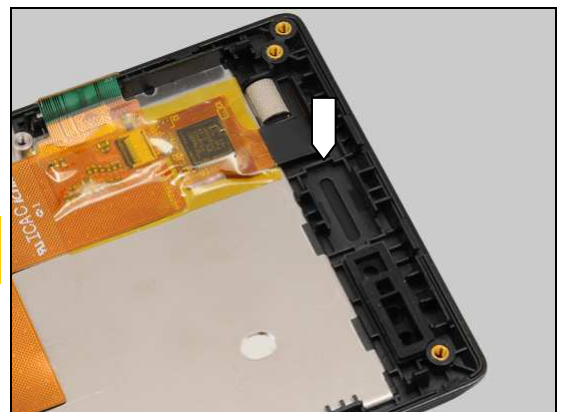
REMOVAL

Detach the Receiver by using a pair of tweezers.



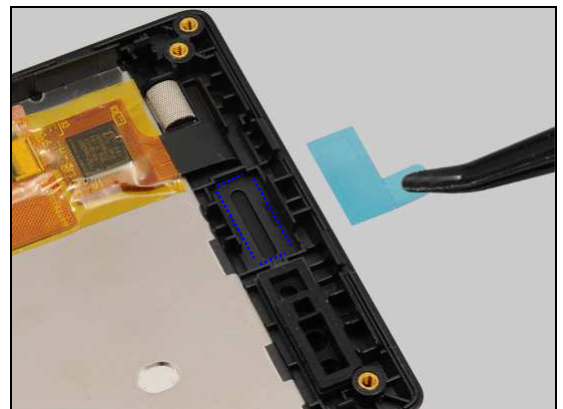
Clean the remaining foil of the Receiver Adhesive on the Front Cover Display Assembly.

Scrap! The Receiver Adhesive is not allowed to be reused!



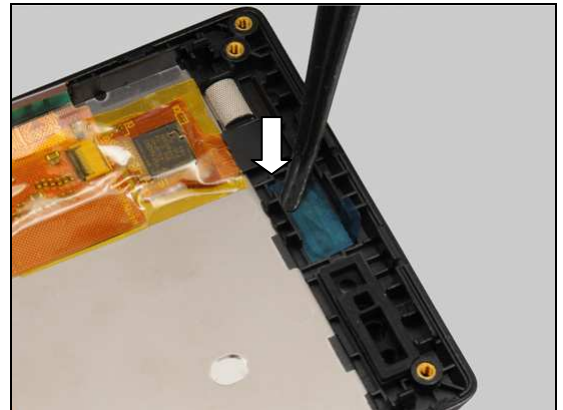
INSTALLATION

Place a new Receiver Adhesive in the correct position.

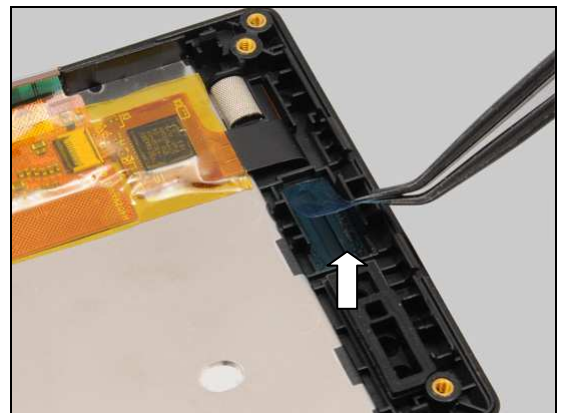


Replacement: Receiver & Receiver Adhesive

Press to secure its attachment.

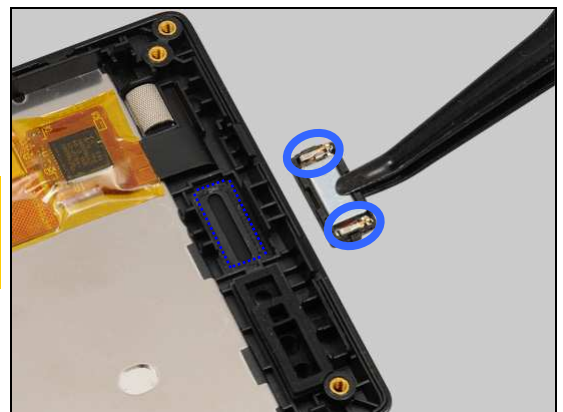


Peel off the protection film.



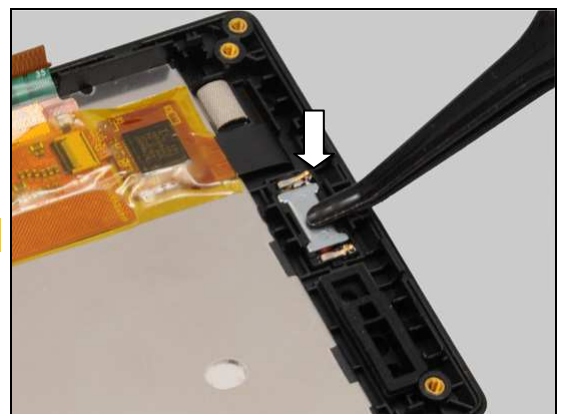
Place a new Receiver in the correct position.

***The pin direction should be as shown in the picture!
Make sure there is no adhesive on the back side of the Receiver.***



Press to secure its attachment.

Do not touch the pins of the Receiver!



Replacement

4.19 RF Rubber

Follow the 3.1 – 3.2 Disassembly instructions!

Prepare a new RF Rubber.

Follow the 5.7 – 5.8 Reassembly instructions!

REMOVAL

Remove the RF Rubber by using a Flex Film Assembly Tool.

INSTALLATION

Place the RF Rubber in the correct position.

Press to secure its position.



Replacement

4.20 Rubber Flash Led White

Follow the 3.1 – 3.4 Disassembly instructions!

Carry out the Removal as described below.

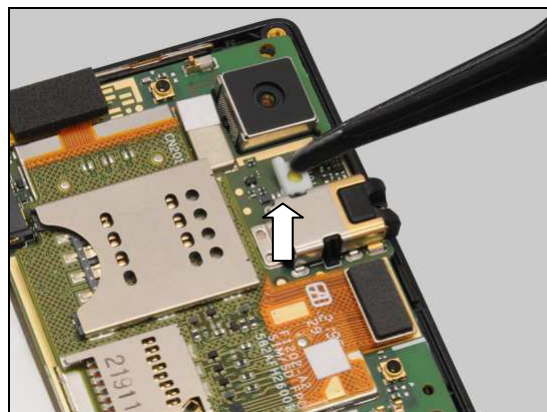
Prepare a new Rubber Flash Led White.

Carry out the Installation as described below.

Follow the 5.4 – 5.5, 5.7 – 5.8 Reassembly instructions!

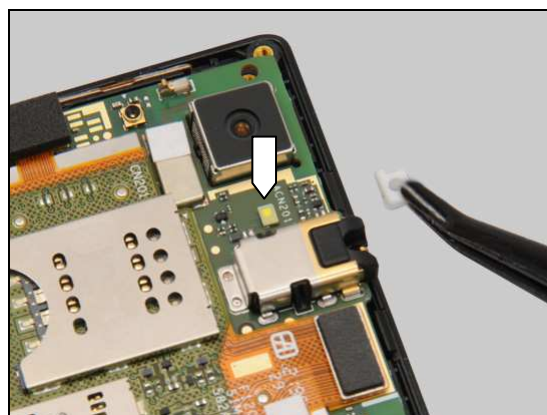
REMOVAL

Detach and remove the Rubber Flash Led White by using a Flex Film Assembly Tool.

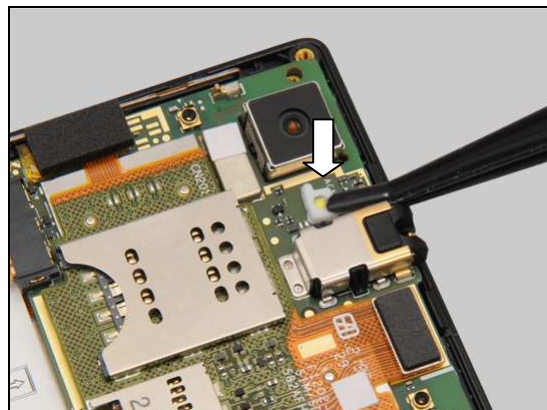


INSTALLATION

Place a new Rubber Flash Led White in the correct position.



Press to secure its position.



Replacement

4.21 Side Key

Follow the 3.1 – 3.4 Disassembly instructions!

Carry out the Removal as described below.

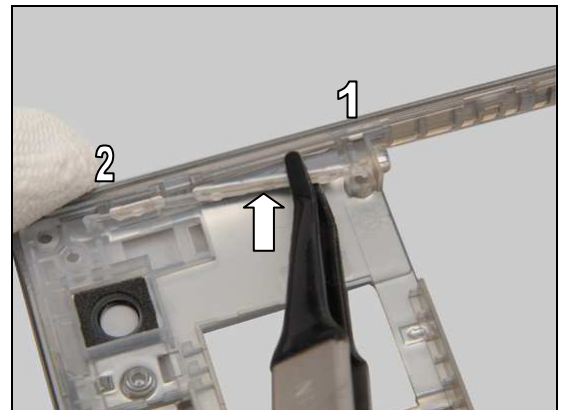
Prepare a new Side Key.

Carry out the Installation as described below.

Follow the 5.4 – 5.5, 5.7 – 5.8 Reassembly instructions!

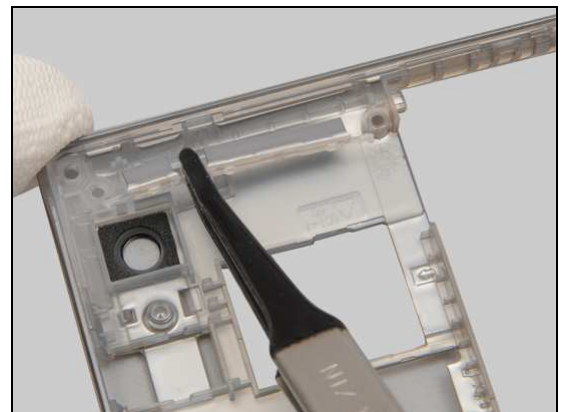
REMOVAL

Release the Side Key from the guiding slot by using a Flex Film Assembly Tool and remove it.

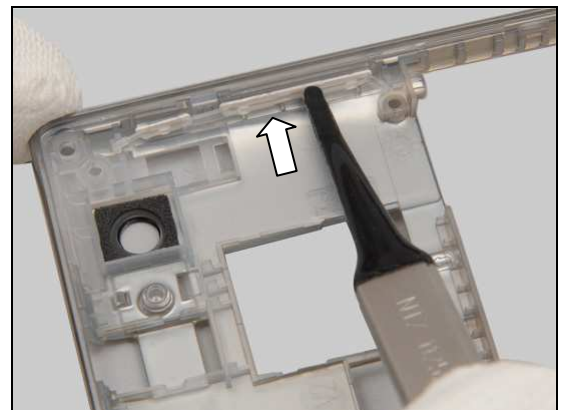


INSTALLATION

Place the Side Key in the correct position.

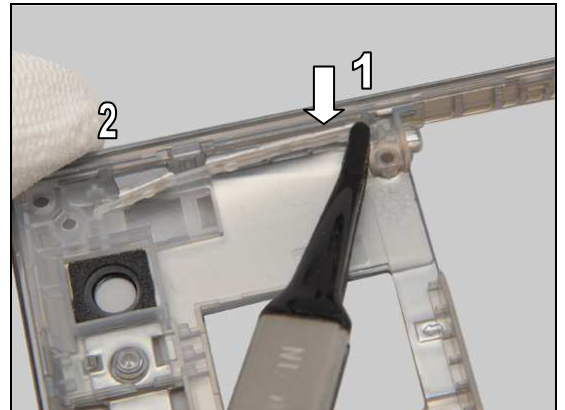


Press the key into the socket.



Replacement: Side Key

Place the two pegs of the Side Key into the cavity.



Replacement

4.22 SIM SD Side Key FPC

Follow the 3.1 – 3.8 Disassembly instructions!

Carry out the Removal as described below.

Prepare a new SIM SD Side Key FPC.

Carry out the Installation as described below.

Follow the 4.24 Installation instructions!

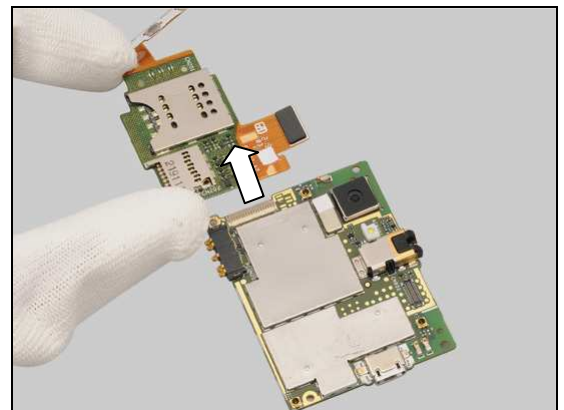
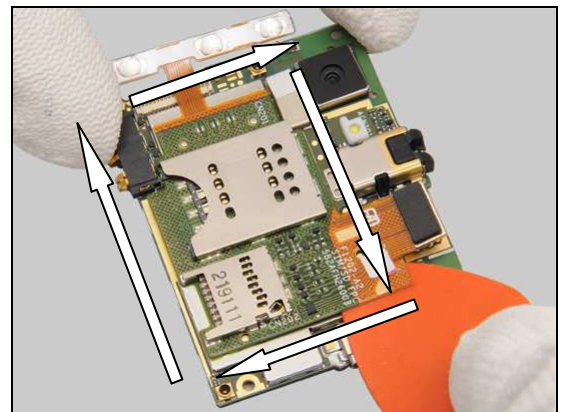
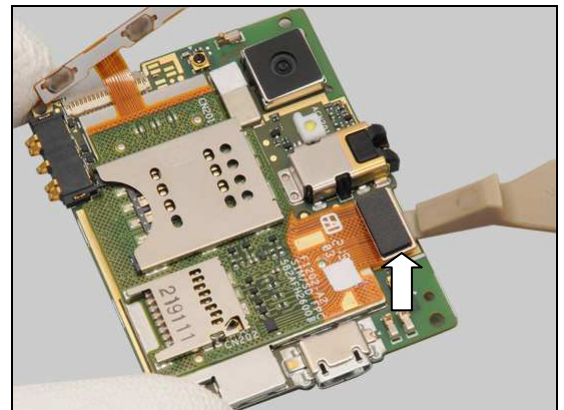
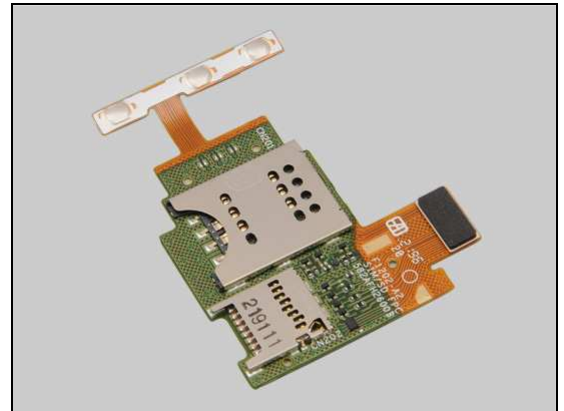
Follow the 5.1 – 5.8 Reassembly instructions!

REMOVAL

Unsnap the BtB connector by using a Front Opening Tool.

Gently slide along to release the foil under it.

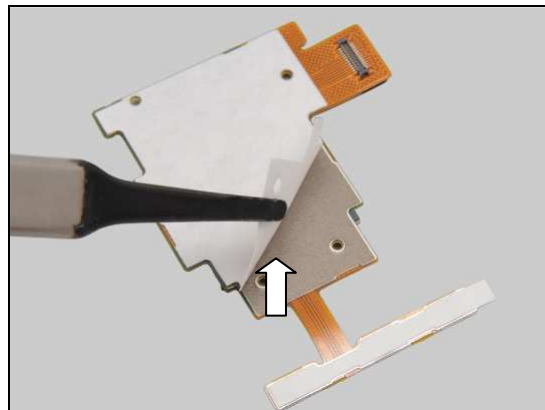
Remove it with fingers.



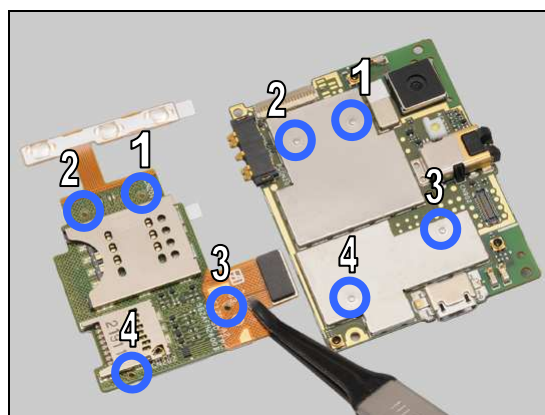
Replacement: SIM SD Side Key FPC

INSTALLATION

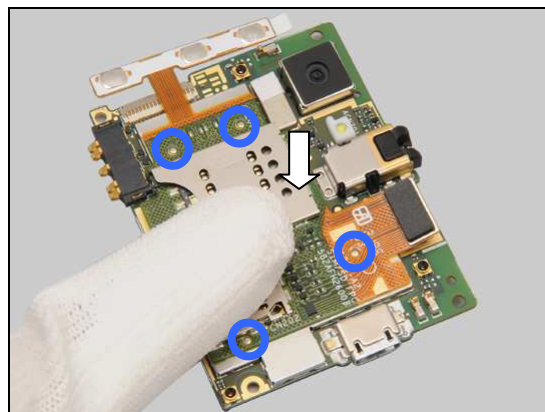
Prepare a new SIM SD Side Key FPC and peel off the protection film at the back side.



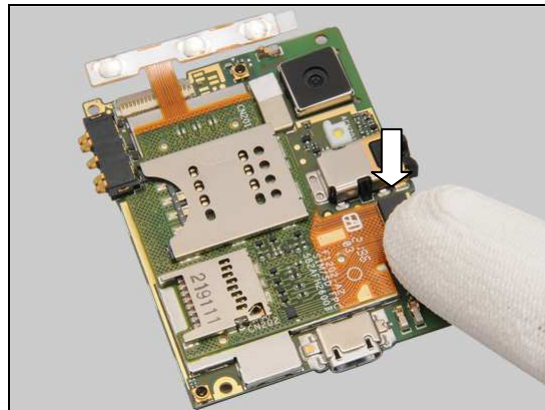
Place the new SIM SD Side Key FPC on its proper position as indicated by the pegs and holes as shown in the picture.



Press to secure its attachment and position.



Press to snap the BtB connector.



Replacement

4.23 Water Indicator

Follow the 3.1 – 3.4 Disassembly instructions!

Carry out the Removal as described below.

Prepare a new Water Indicator.

Carry out the Installation as described below.

Follow the 5.4 – 5.5, 5.7 – 5.8 Reassembly instructions!

REMOVAL

There are two Water Indicator on the phone as shown in the picture.

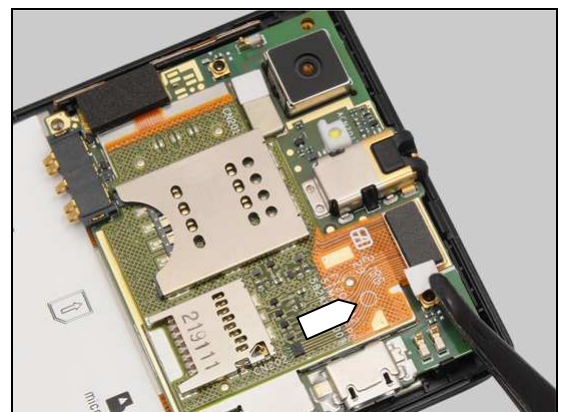
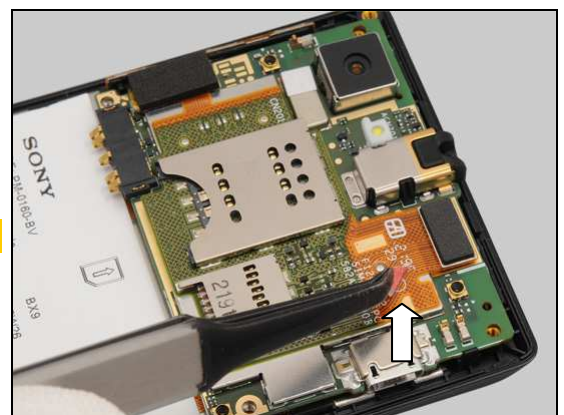
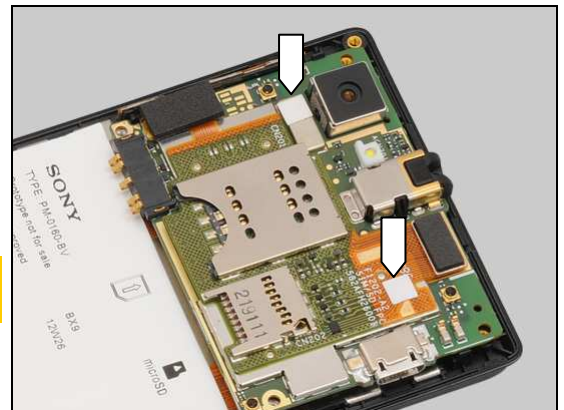
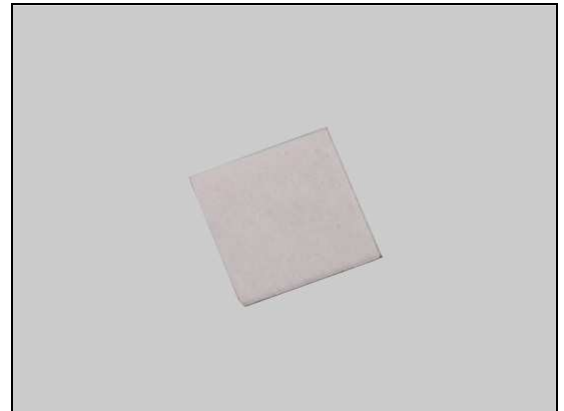
Note: Replacement method is the same for the two Water Indicator!

Detach the Water Indicator.

Scrap! Not to be reused!

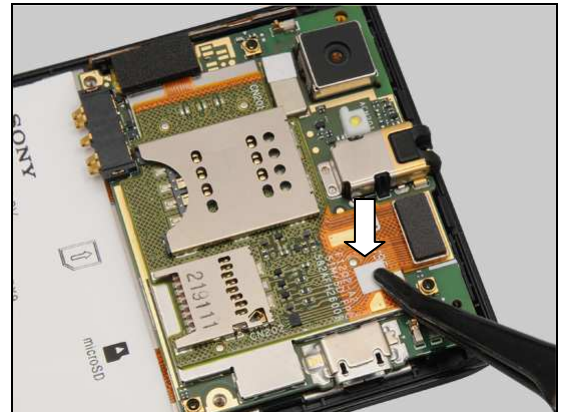
INSTALLATION

Place a new Water Indicator in the correct position.



Replacement: Water Indicator

Press to secure its attachment.



Replacement

4.24 Board Swap - Replacement

Follow the 3.1 – 3.8 Disassembly instructions!

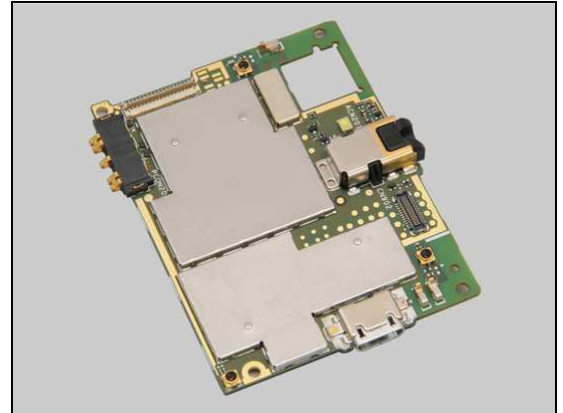
Follow the 4.16, 4.20 Removal instructions!

Replace the Swap Board.

Follow the 4.16, 4.20, 4.22 and 4.23 Installation instructions!

Follow the 5.1 – 5.8 Reassembly instructions!

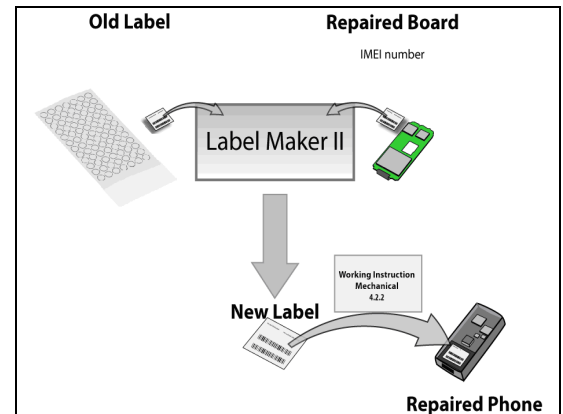
Note: Calibrate the Touch Panel 1270-6729 Trouble Shooting Application – mechanical after replacement.



4.25 Board Swap – Change Label

CHANGE LABEL

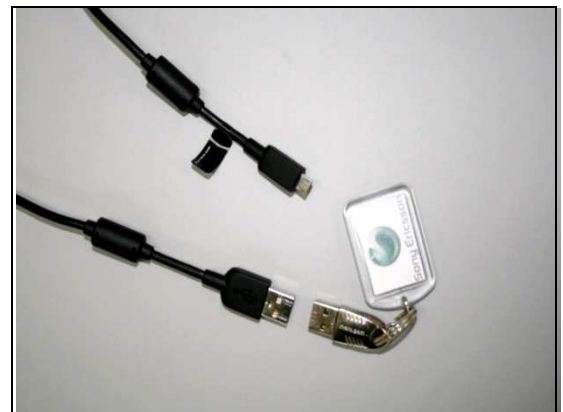
Follow the instructions in the Generic Repair Manual – Build swap for change of label.



4.26 Board Swap – Customize of Software

CUSTOMIZE OF SOFTWARE

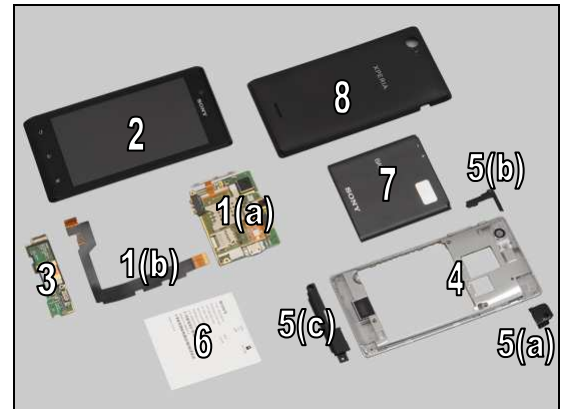
Follow the instructions in the Generic Repair Manual – Build swap for customization of the software.



5 Reassembly

The reassembly is done in the following order:

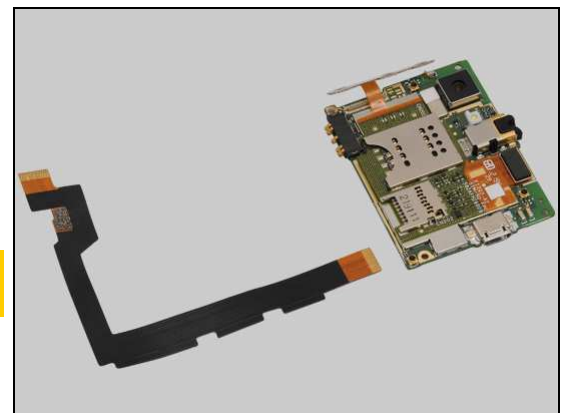
1. Main PBA (a) & Link FPC (b)
2. Front Cover Display Assembly
3. Sub Board Assembly
4. Rear Cover
5. Antenna BT WIFI (a) & Antenna GPS (b) & Antenna Main (c)
6. Core Unit Label
7. Battery
8. Battery Cover



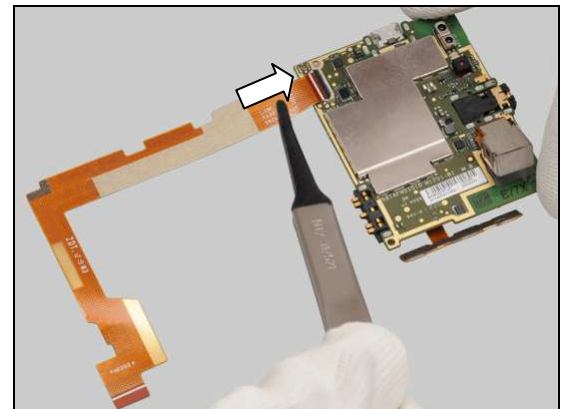
5.1 Main PBA & Link FPC

Prepare the Main PBA and new Link FPC.

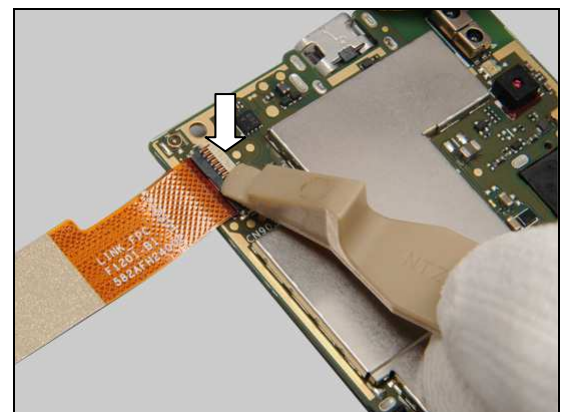
Use new Link FPC due to it can't be reused after disassembly.



Connect the ZIF connector by using a Flex Film Assembly Tool.

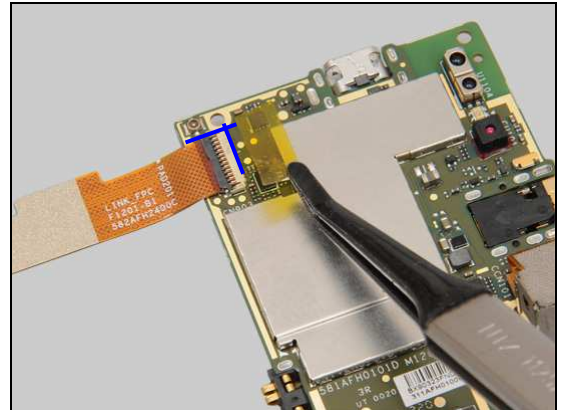


Lock the ZIF connector by using a Front Opening Tool.

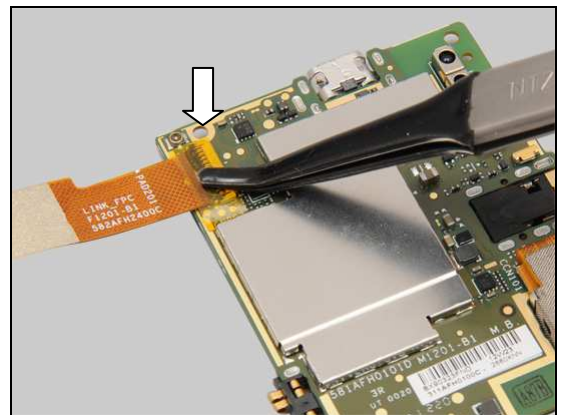


Reassembly

Place a new Connector Film in the correct position as shown in the picture.

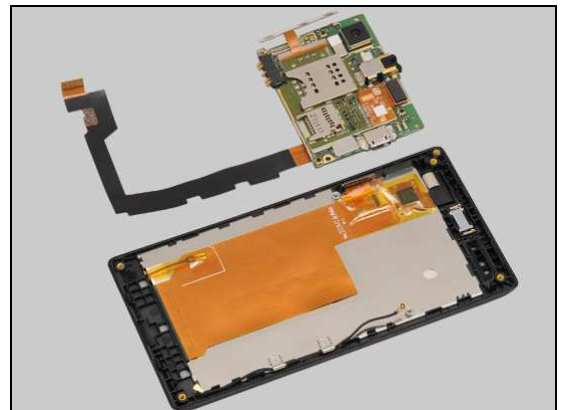


Press to secure its attachment.

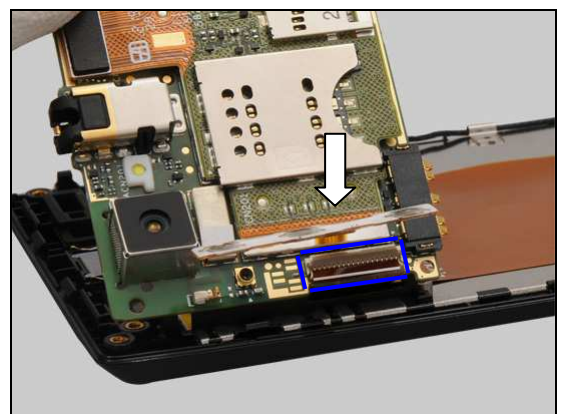


5.2 Front Cover Display Assembly

Prepare the Main PBA assembly and Front Cover Display Assembly.

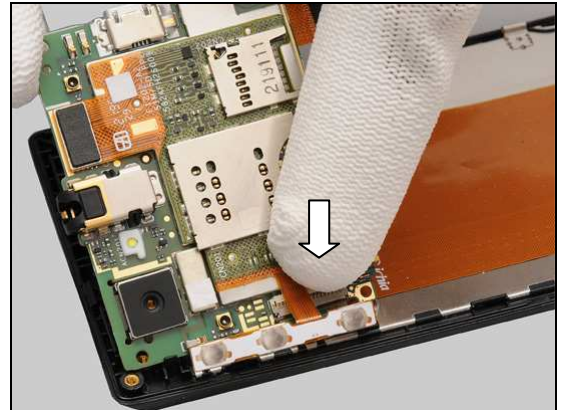


Connect the ZIF connector.

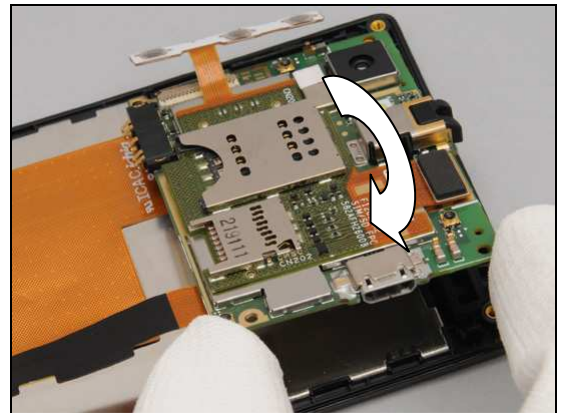


Reassembly

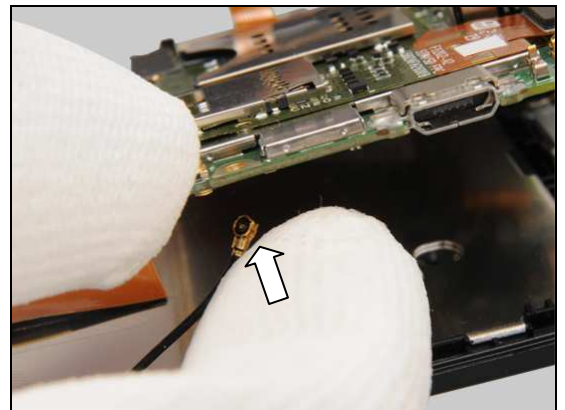
Lock the ZIF connector by using fingers.



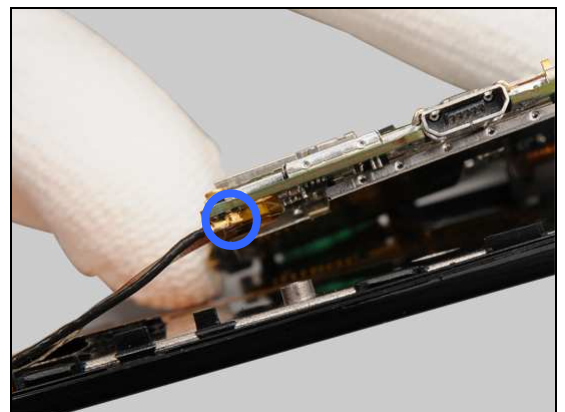
Turn over the Main PBA assy to about 20 degrees.



Press to connect the end of the Coaxial Cable by fingers.

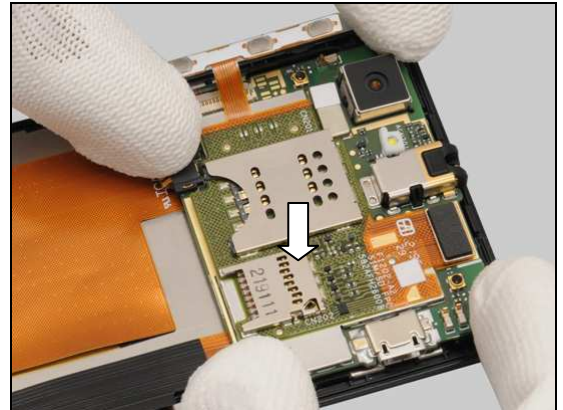


Make sure the Coaxial Cable connector is well assembled as shown in the picture.

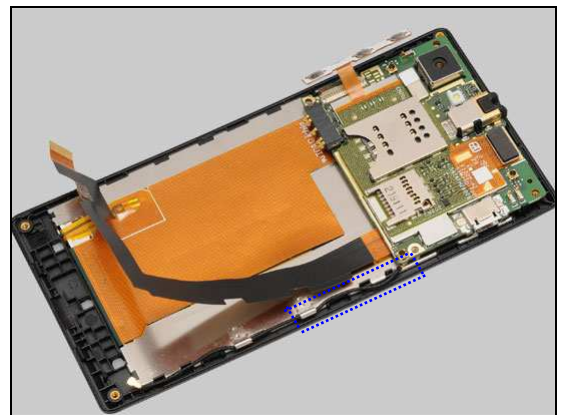


Reassembly

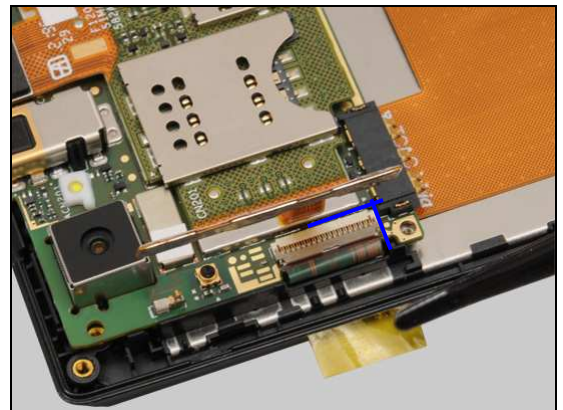
Lay down the Main PBA assy and press to secure its position.



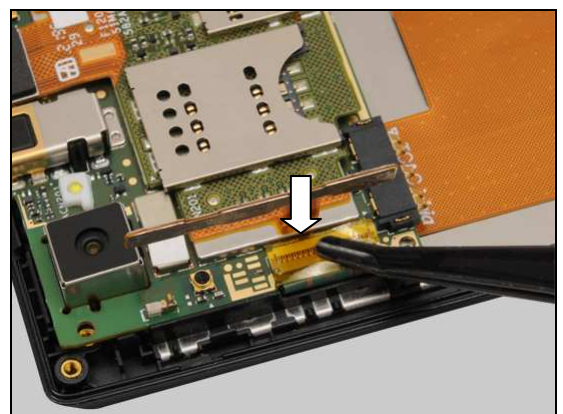
Make sure the Coaxial Cable is in correct position as shown in the picture.



Place a new Connector Film in the correct position as shown in the picture.

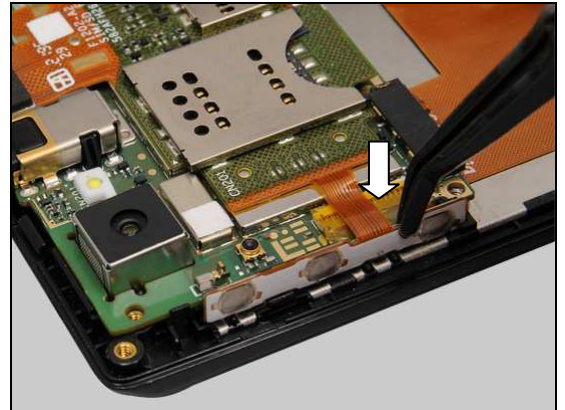


Press to secure its attachment.

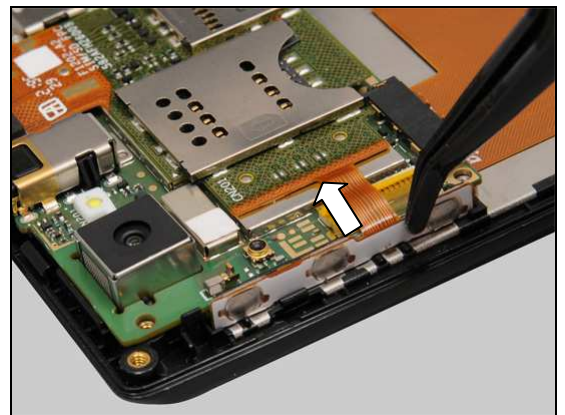


Reassembly

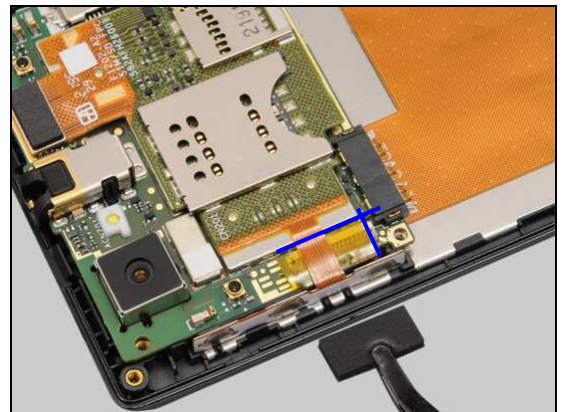
Insert the key dome of SIM SD Side Key FPC into the cavity.



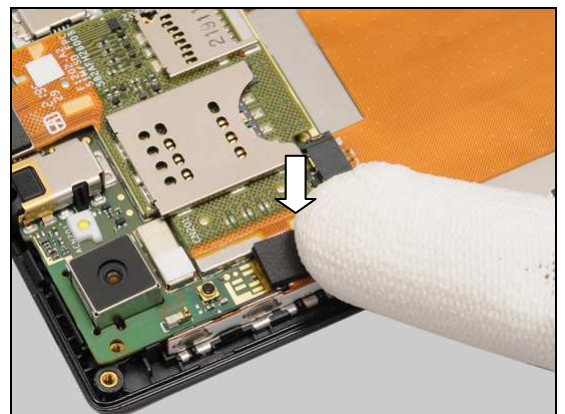
Press to secure its attachment.



Place a new LCM connector sponge in the correct position.

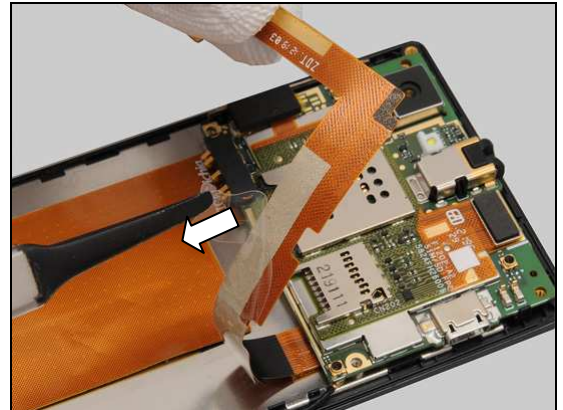


Press to secure its attachment.

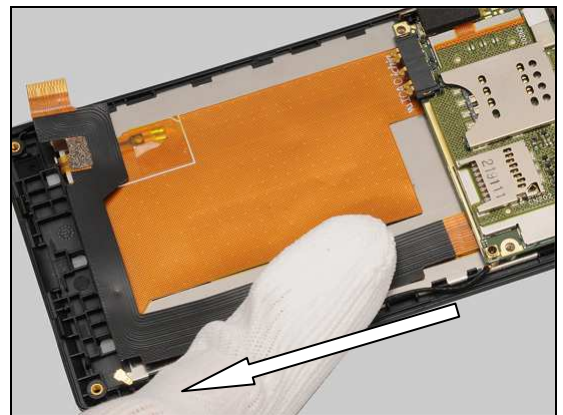


Reassembly

Peel off the protection film of the Link FPC.



Press along the Link FPC to secure its position and attachment.

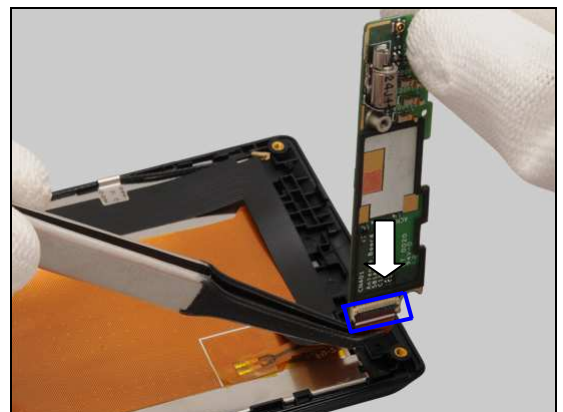


5.3 Sub Board Assembly

Prepare the Sub Board Assy and the front unit as shown.

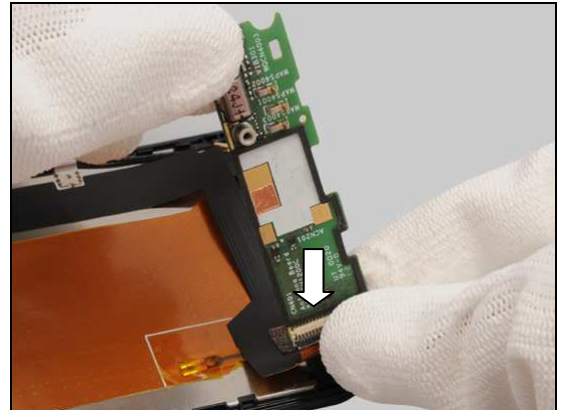


Connect the ZIF connector by using a Flex Film Assembly Tool.

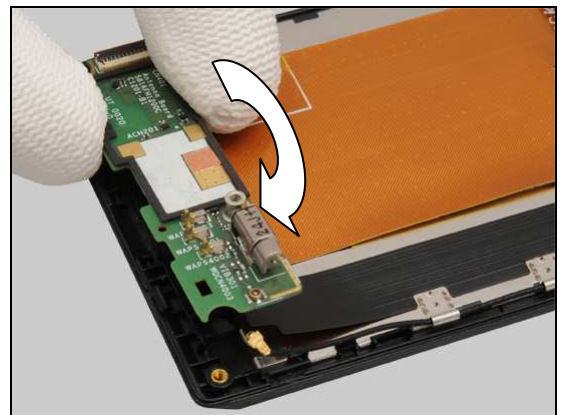


Reassembly

Lock the ZIF connector with fingers.



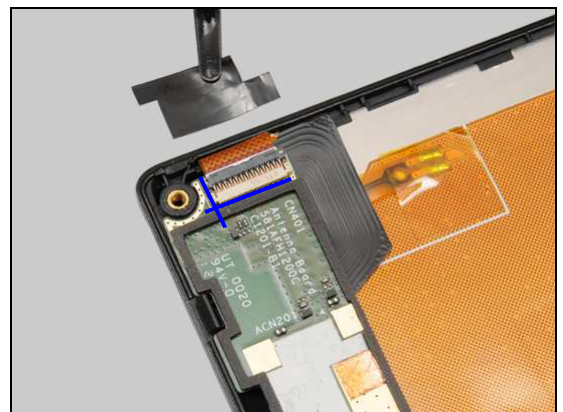
Turn over the Sub Board Assembly to lay down on the Front Cover Display Assembly.



Press to secure its position.

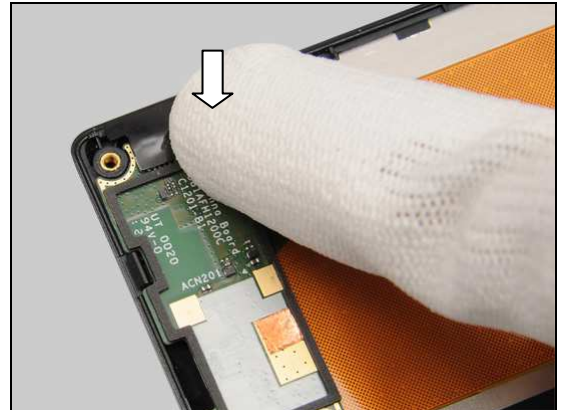


Place a new Link FPC kapton in the correct position as shown in the picture.

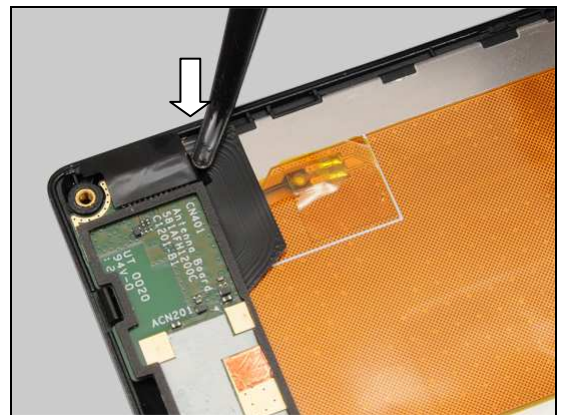


Reassembly

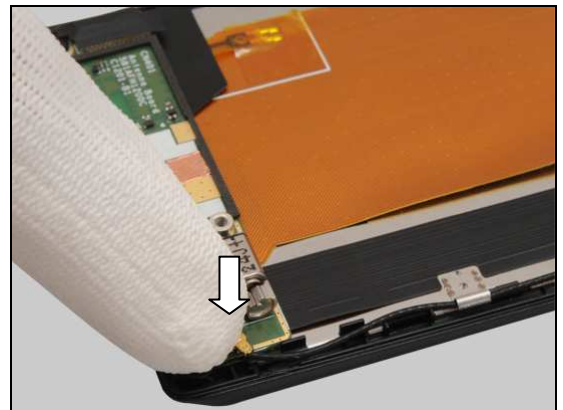
Press to secure its attachment.



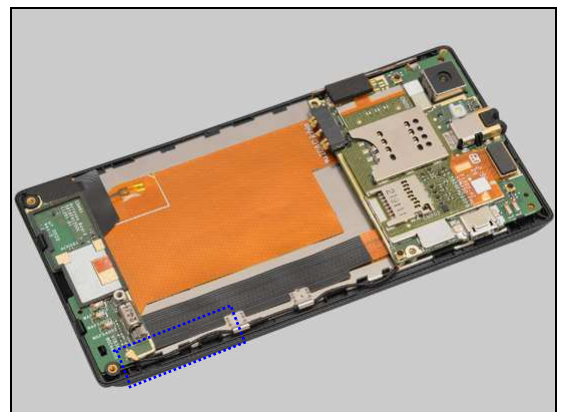
Press down to secure its attachment.



Connect this end of the Coaxial Cable with finger.



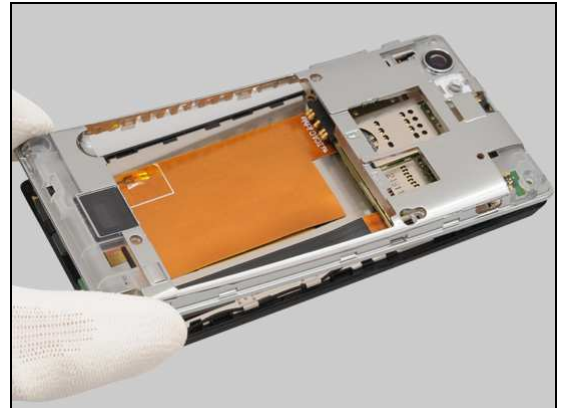
Make sure the Coaxial Cable is in correct position as shown in the picture.



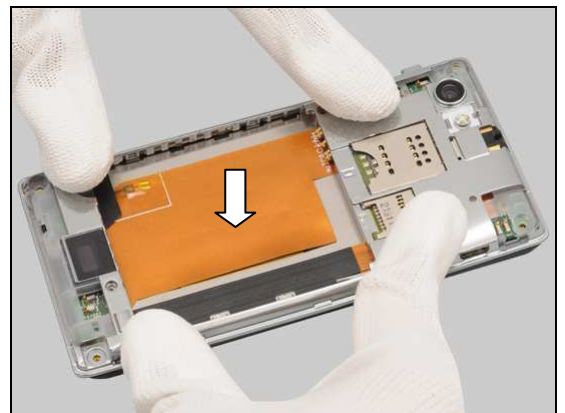
Reassembly

5.4 Rear Cover

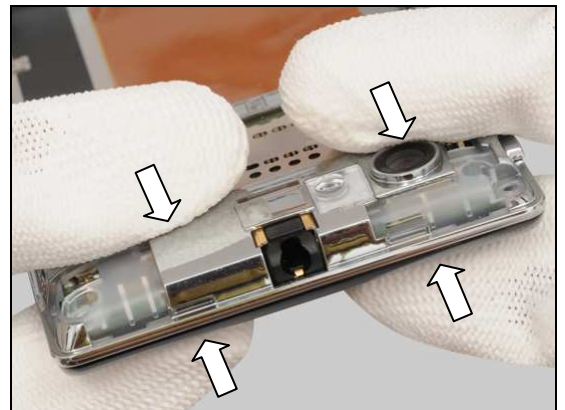
Place the Rear Cover on the front unit.



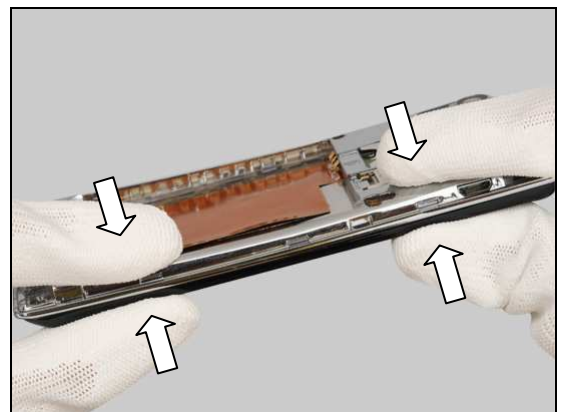
Press to snap the hooks of the Rear Cover.



Secure the hooks on the top side.

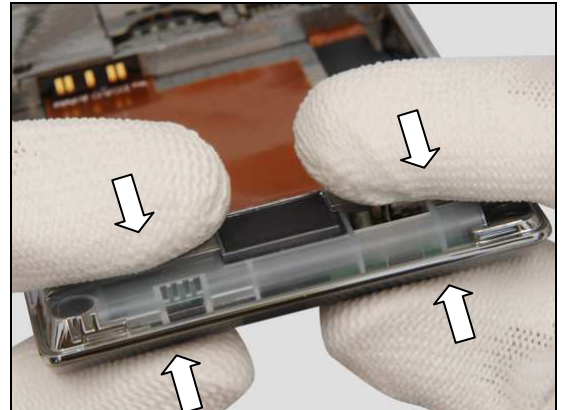


Secure the hooks on the right side.

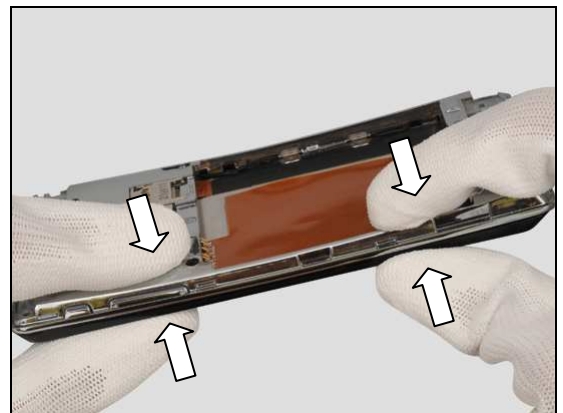


Reassembly

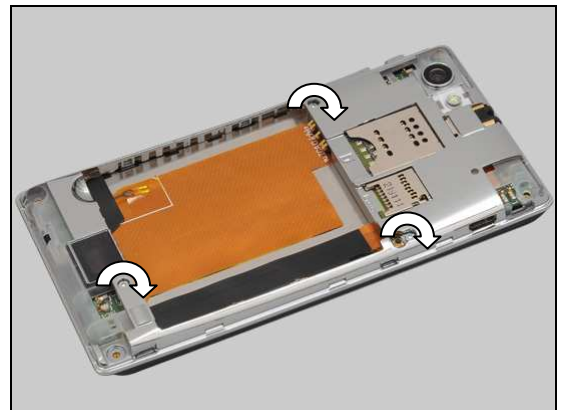
Secure the hooks on the bottom side.



Secure the hooks on the left side.



Apply 10 ± 1 Ncm torque when tightening the three Screw M1.6*2.8 with Bits (T5).

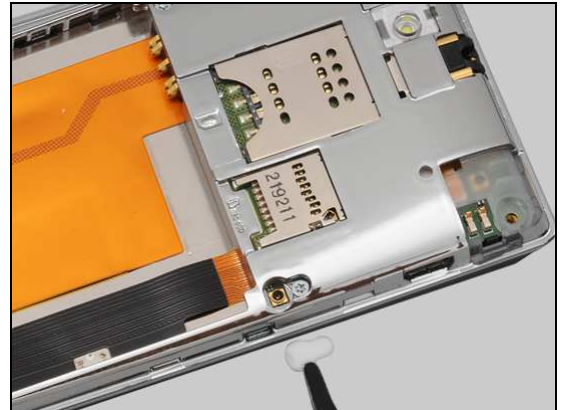


Apply 10 ± 1 Ncm torque when tightening the Screw M1.6*4.2 with Bits (T5).

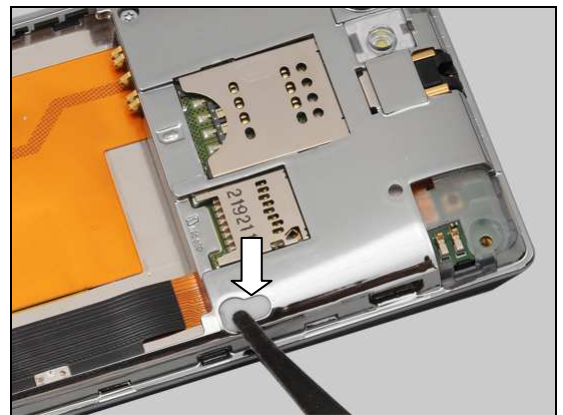


Reassembly

Place the RF Rubber in the correct position.

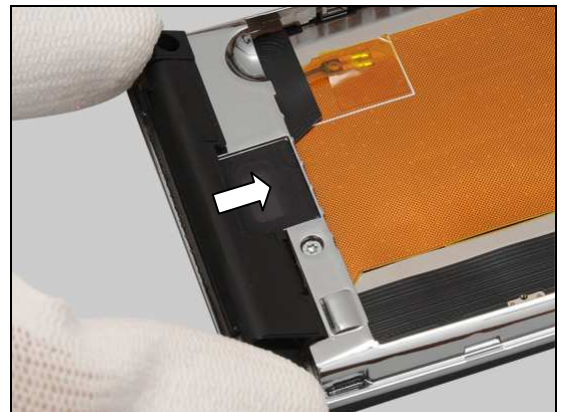


Press to secure its position.



5.5 Antenna BT WIFI & Antenna GPS & Antenna Main

Insert the Antenna Main into the hook as shown in the picture.

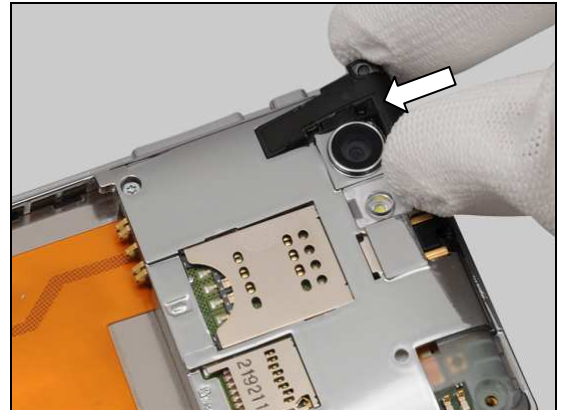


Press to secure its position.

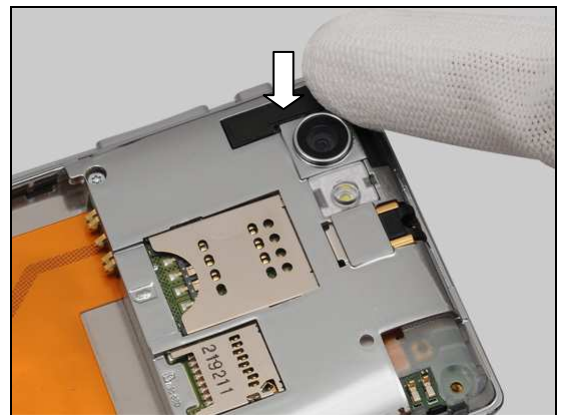


Reassembly

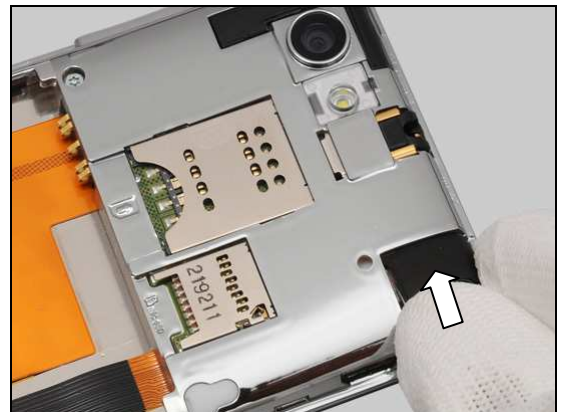
Insert the Antenna GPS into the hook as shown in the picture.



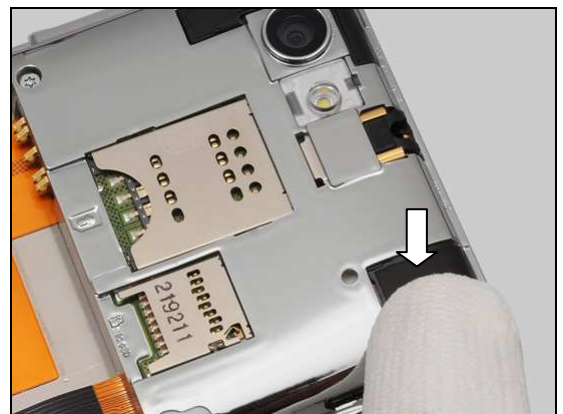
Press to secure its position.



Insert the Antenna BT WIFI into the hook as shown in the picture.



Press to secure its position.



Reassembly

Apply 10 ± 1 Ncm torque when tightening the three Screw M1.6*4.2 with Bits (T5).



Apply 10 ± 1 Ncm torque when tightening the Screw Lanyard M1.6*3.2 with Bits (T5).



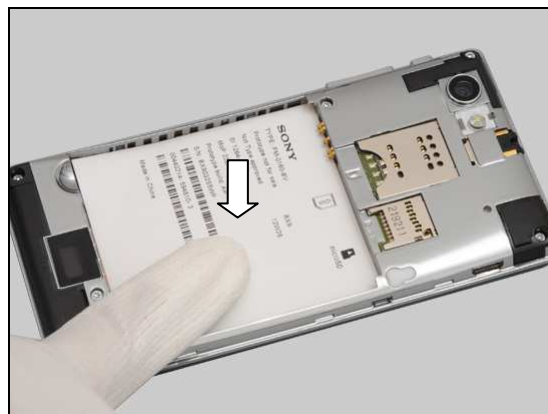
5.6 Core Unit Label

Check that the proper label format is loaded in the Zebra printer and print a new Label by using the 'LabelMake' software.

One label only is allowed!



Press along the surface to secure the attachment.



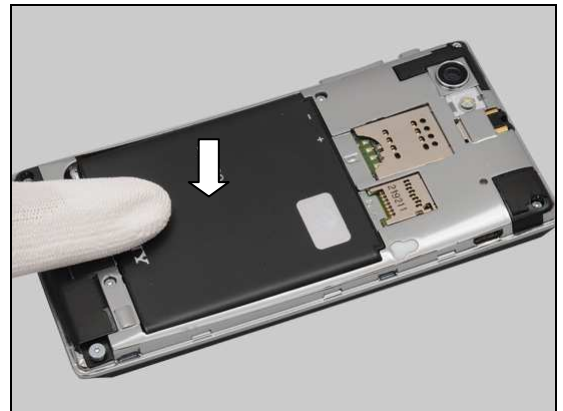
Reassembly

5.7 Battery

Place the battery into the socket.



Press to secure its position.



5.8 Battery Cover

Place the Battery Cover in the correct position from top side.



Press to secure its position.



6 Revision History

Rev.	Date	Changes / Comments
1	2012-Oct-9	Initial release
2	2012-Oct-15	Add Touch panel calibration--1270-6729 action in chapter 4.8 and 4.24